

# BCP Council FCERM Update

Presentation to SCOPAC & Southern Coastal Group Combined Meeting, 15 July 2022

**Matt Hosey**, FCERM Head of Service



# BCP Approach to FCERM Team

- Pre-2019, Dorset had a two-tier system + Unitary Authorities in Poole & Bournemouth, each with their own coastal / flood risk team(s) often “hidden” within other larger teams.



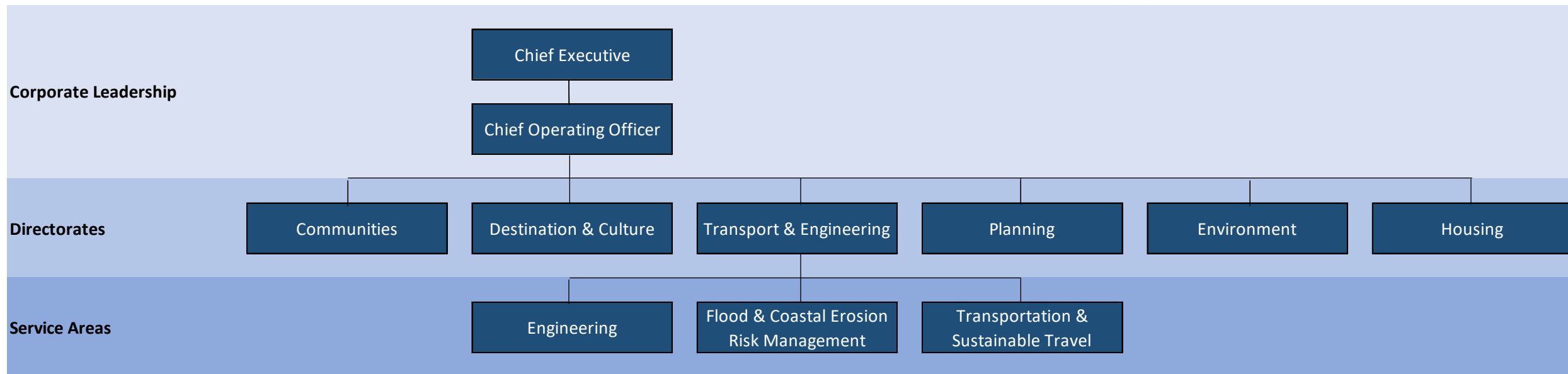
# BCP Approach to FCERM Team

- Pre-2019, Dorset had a two-tier system + Unitary Authorities in Poole & Bournemouth, each with their own coastal / flood risk team(s) often “hidden” within other larger teams.
- BCP Council formed in April 2019 following Local Government Review.

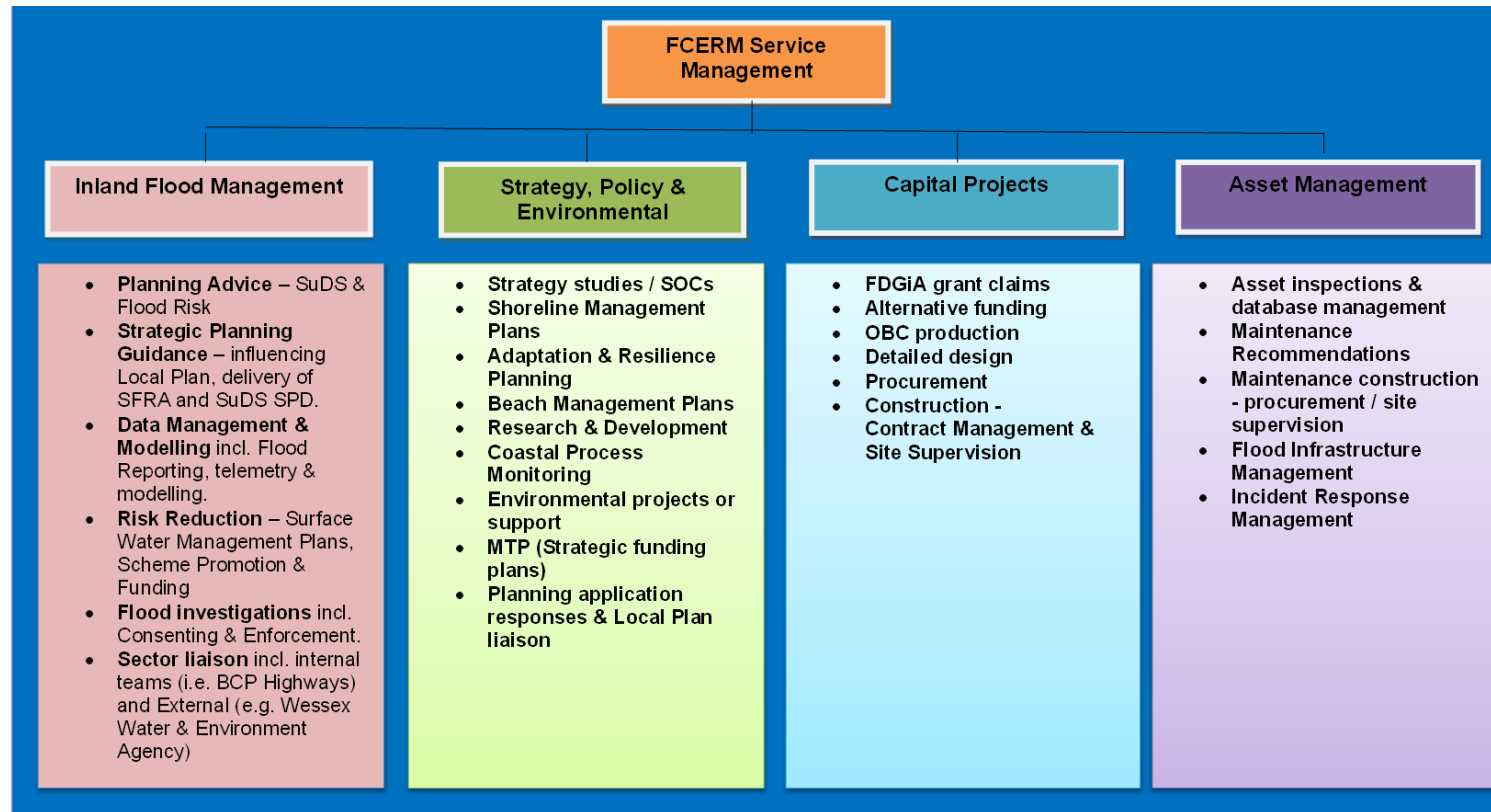


# BCP Approach to FCERM Team

- Pre-2019, Dorset had a two-tier system + Unitary Authorities in Poole & Bournemouth, each with their own coastal / flood risk team(s) often “hidden” within other larger teams.
- BCP Council formed in April 2019 following Local Government Review.
- Provided opportunity to re-organise how FCERM is delivered >> FCERM Service recognised in own right in new BCP structure.

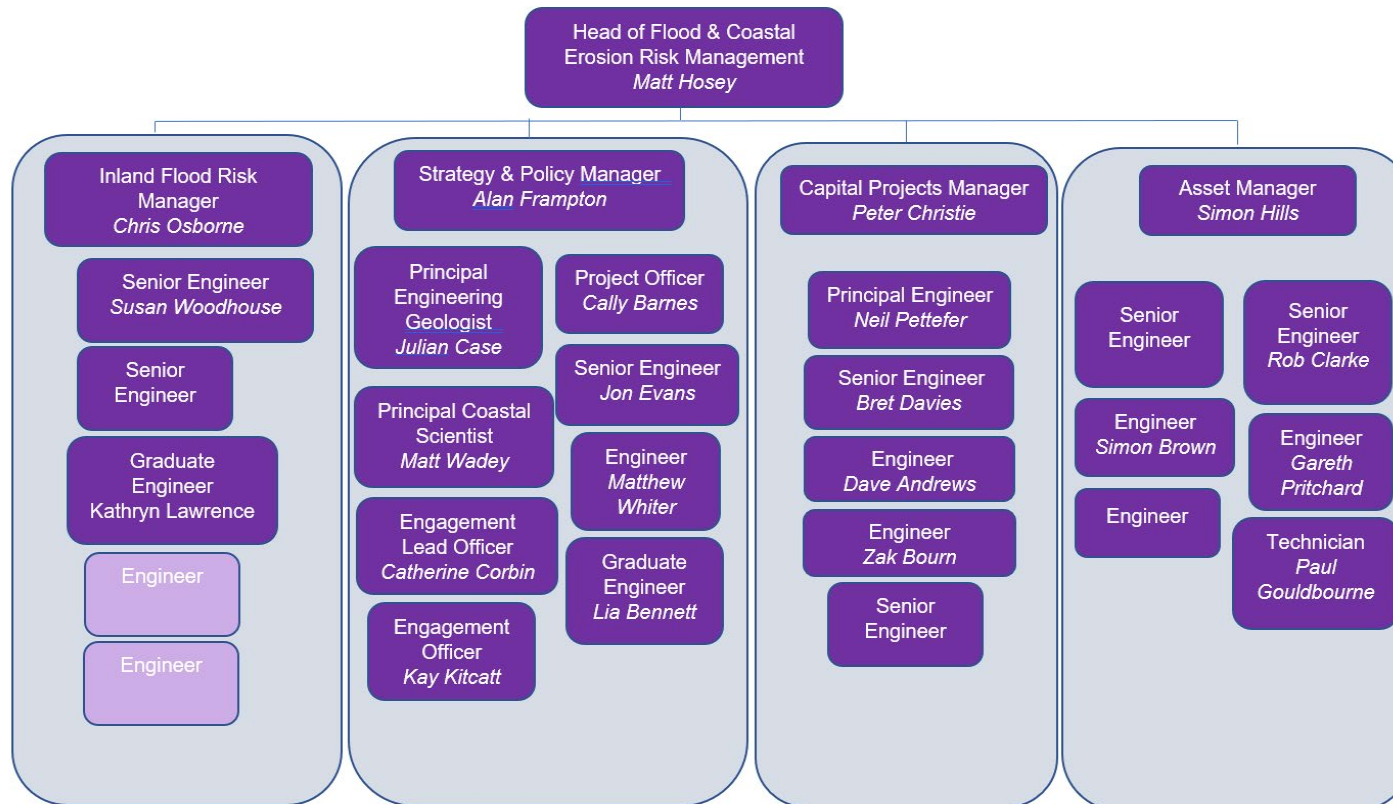


- In developing the new FCERM Service for BCP Council, we are establishing a new FCERM Centre of Excellence to tackle the challenges of flooding and coastal change both across the BCP area, and through providing collaborative support to other authorities in the region.

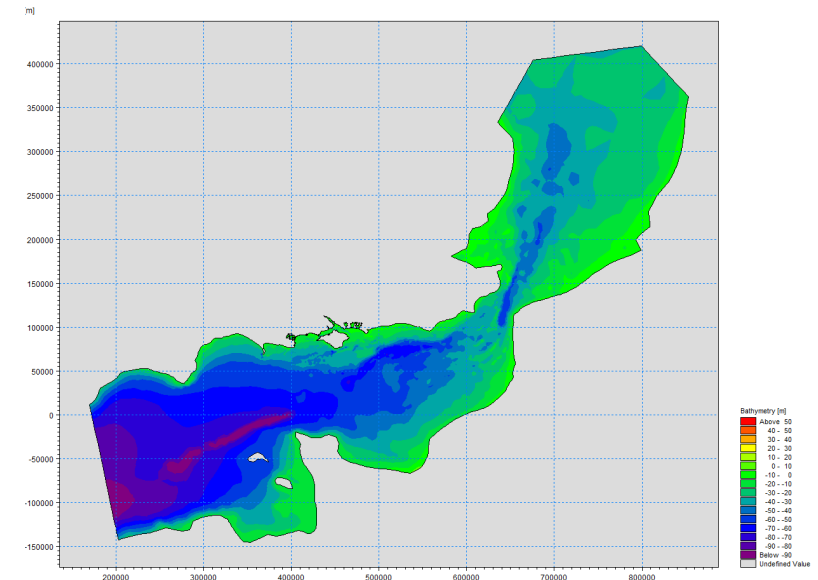


# The BCP FCERM Team

- In developing the new FCERM Service for BCP Council, we are establishing a new FCERM Centre of Excellence to tackle the challenges of flooding and coastal change both across the BCP area, and through providing collaborative support to other authorities in the region.
- Approval was given by BCP Cabinet to progress with this model on 1<sup>st</sup> September 2021 (see <https://www.bcpCouncil.gov.uk/news-article.aspx?title=centre-of-excellence-to-deliver-flood-and-coastal-erosion-risk-management>).



- This Centre of Excellence model will allow the FCERM team to deliver more projects, increase income, attract quality staff and reduce reliance on consultancy support for day-to-day client role (but increase our ability to progress more projects that we will procure consultants to deliver).
- The basics of this model are:
  - Key skills can be targeted
  - More attractive in the market for quality staff
  - More able to bid for grant funding
  - More able to deliver the projects in-house
  - Grant funding provides income offsetting the staff costs
  - Communities get more projects delivered making them more resilient to climate change
  - Reputation increases ability to recruit and retain staff
  - Reputation also gives confidence to our funding partners who support our delivery.
- The overall aim of this model is to allow us to deliver a high-quality FCERM service to our communities.



# The BCP FCERM Team – Collaborating with others

---



- Examples of where our Centre of Excellence model is supporting others already:
  - Collaboration agreement with Dorset Council, supporting the DC FCERM team on various projects, inc:
    - West Bay Sediment Tracer Study (joint project with DC, BCP & Coastal Partners)
    - Weymouth Harbour & Esplanade FCERM Scheme SOC and OBC support
    - Chiswell FCRM Strategy Scoping Study (joint project for DC & EA)
    - Swanage, Ringstead and Lyme Regis Beach Management Plan (BMP) updates.
  - Updating Chesil & Preston BMPs for the EA.
  - SW SMP Refresh technical support to get SMPs 16, 17 and 18 progressed with SMP-R update tasks.
  - SW Sediment Transport Scoping Study (supported by Sam Cope at Coastal Partners)
  - East Devon DC support, inc. scoping BMP updates and supporting capital maintenance project delivery.



# Christchurch Bay & Harbour FCERM Strategy

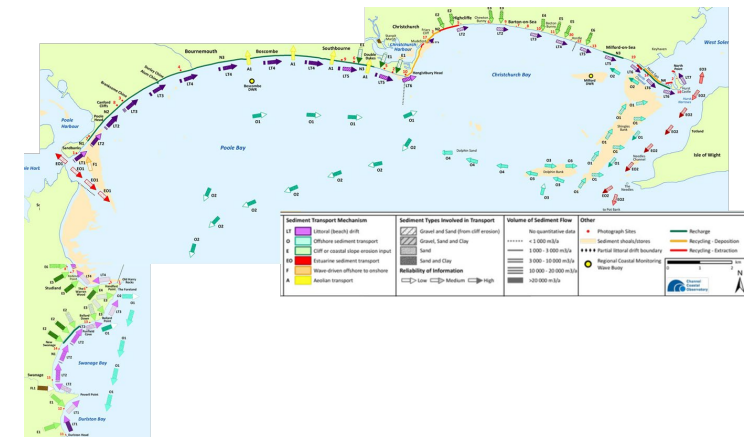
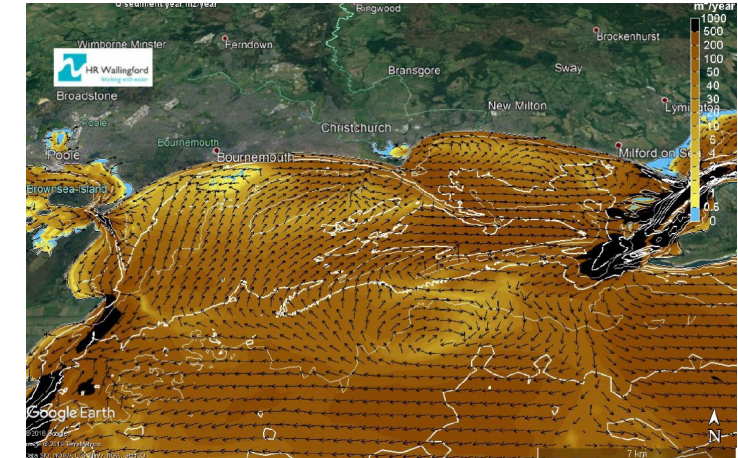


- Started in 2021; expect to complete early 2024 (with EA LPRG approval).



# Durlston to Hurst Sediment Resource Management Programme

- SMP policy envisages HTL implementation primarily by ongoing beach management.
- Management of beaches in Poole and Christchurch Bays has risen in cost whilst the availability of appropriate material has reduced.
- Climate change and development adds further pressure to manage the coast in these areas which effectively are part of a shared sediment system.
- In 2015, coastal engineers from these areas met with the CCO and Environment Agency to discuss joint working, to be enhanced by development of a regional numerical model that could support coastal engineering works across this region.
- In 2016, the Environment Agency approved a project comprising £270k Grant in Aid and a £50k contribution of staff time across the authorities. That FDGiA funded project provided:
  - Deployment of 9 in-situ Acoustic Wave And Current (AWAC) recording devices to record field data.
  - HR Wallingford development, calibration and validation of numerical models:
    - Coupled flow model (TELEMAC-2D)
    - Wave model (TOMAWAC)
    - Sediment transport (SISYPHE).
  - Refinement and handover of model to BCP (for future use).
  - Preparation of summary report to close out project >> **improved evidence of sediment transport!**
- **Now >> Developing forward plan to progress towards sustainable use of sediment resources in both bays >> evolved to be the Durlston to Hurst Sediment Resource Management Programme.**



# Poole Bay Beach Management Scheme



- Poole Bay stretches from Sandbanks to Hengistbury Head
- The last 100 years coastal defences have included building of seawalls, a groyne field and creation and maintenance of an artificially widened beach.

- The 2011 Poole & Christchurch Bays Shoreline Management Plan (SMP) set policies to manage coastal erosion risk in Poole Bay, through a mostly 'Hold the Line' approach, for next 100 yrs.
- In May 2020, BCP Council was awarded £33 million of Government funding to:
  - Replace the remaining 26 timber groynes located along the seafront from Southbourne to Alum Chine (2020 – 2026)
  - Provide two beach renourishments, the first of which occurred in January-March 2021 (2021 – 2032)
  - Repair and upgrade Hengistbury Head Long Groyne to ensure the continuation of coast protection for Poole Bay and Christchurch Harbour (2021 – 2024).

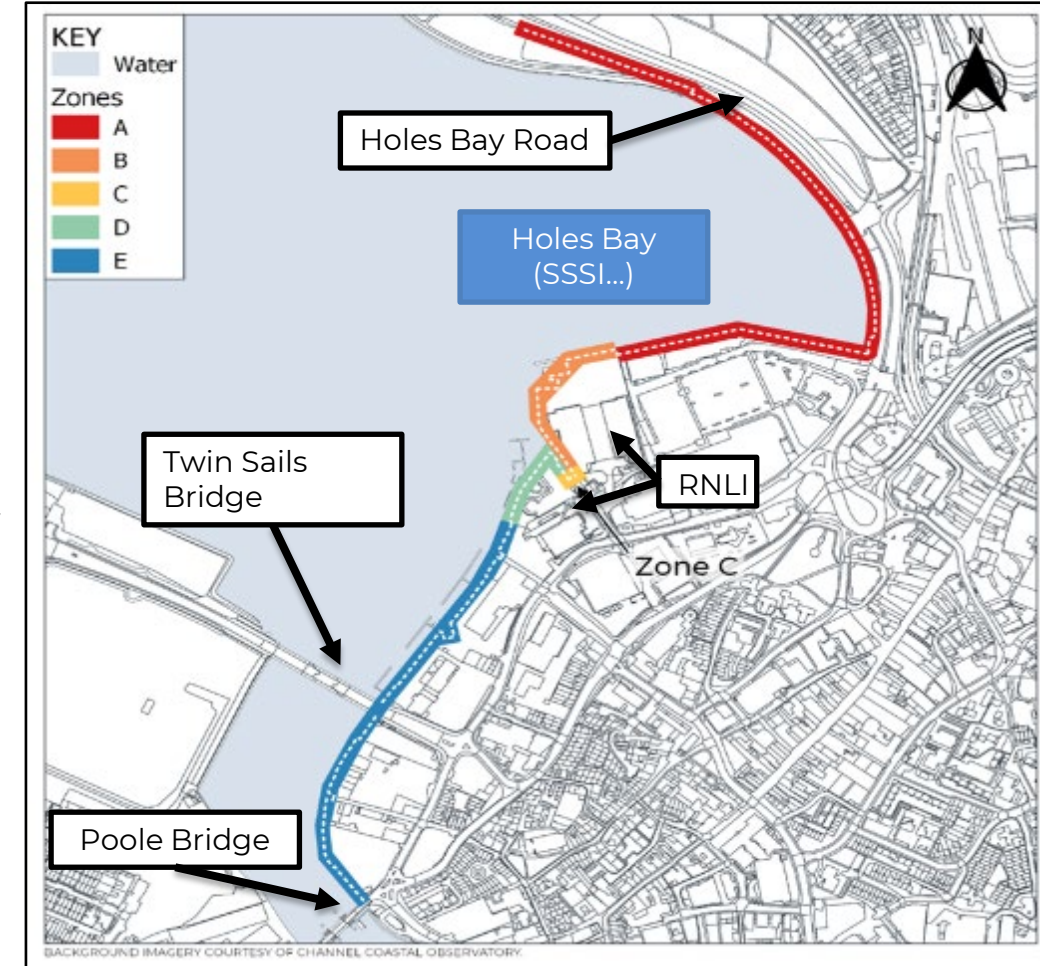




# Poole Bridge to Hunger Hill Flood Defence Scheme

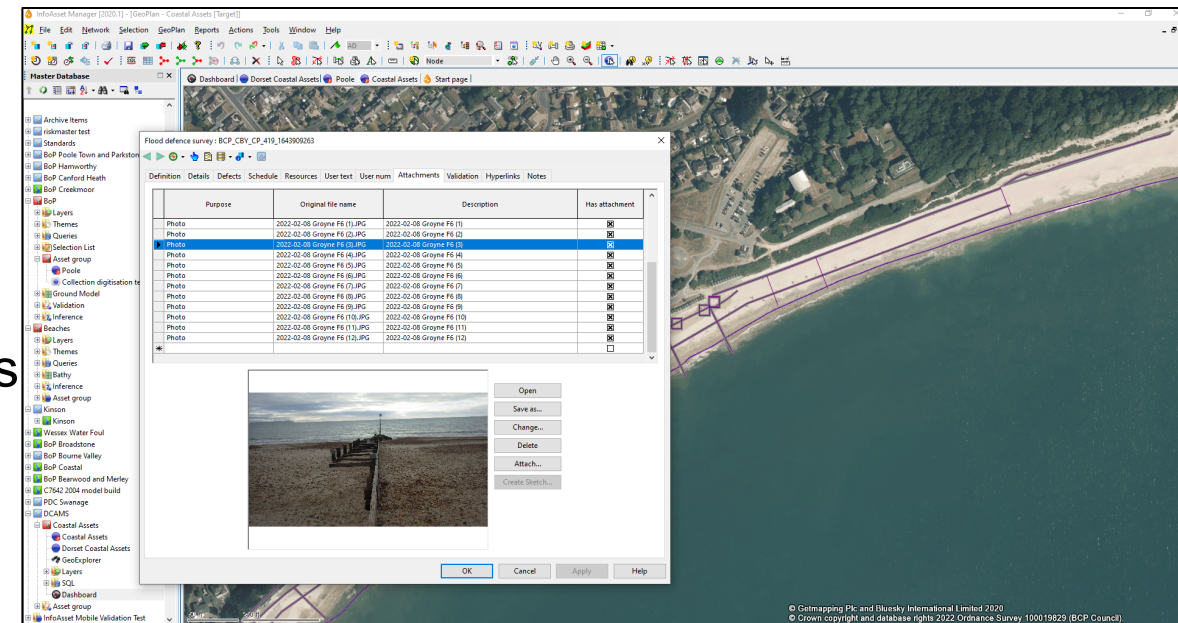


- Historically awaiting developer led flood defence measures (including 0% CIL)
- 2018 – Council led progression of single scheme
- OBC submission in Oct 2020 (after Sep '20 Cabinet approval)
  - £12.4 million scheme
  - Benefitted from June project appraisal rule changes
  - Significant impact on regeneration / a public connectivity
- Approved in January 2021, which commenced the stakeholder engagement, feasibility design and consents pre-application dialogue
- Currently in detailed design, statutory consents and services negotiations and progressing the land strategy
- Involves stakeholder liaison with approximately 40 directly impacted groups / land interests.



# Dorset Coastal Asset Management System (DCAMS)

- £230k of Local Levy secured to create new asset database for BCP & Dorset Council's
- Database built on InfoWorks software
- EA accredited training completed for all inspectors
- Drone capability for difficult to reach assets
- Maintenance recommendations to inform asset investment plan
  - Limited BCP maintenance budget
  - Capital requests where needed
  - CIL?
- Similar exercise planned for surface water assets
  - Compliance with LLFA responsibilities
- Transferable data to EA systems (AIMS) and others
- Lobbying for FDGiA for maintenance requirements



# The end!

- To find out more about FCERM at BCP, visit our website: <https://twobays.net/>

