



SCOPAC

STANDING CONFERENCE
ON PROBLEMS ASSOCIATED
WITH THE COASTLINE



**Southern
Coastal
Group**

SCOPAC research update

July 2022

2015 – 2020 research programme

- Dissemination – website and webinars

2020 – 2025 research programme

- Overview of current major and minor projects

SCOPAC research programme

2015 - 2020

Annual expenditure	Carried over	£24,200	£8,100	£32,700	£15,741	£17,459	TOTAL project allocation
Research/project	Financial Yr						
	2015/2016	2016/2017	2017/2018	2018/2019	2019/2020	2020/2021	
Dismantling Timber Groynes							£10,000
Scour project (minor fund 2015-2017)							£4,000
Pagham tracer minor project (minor fund 2015-2017)							£2,000
Historical photography scanning							£13,000
Landfill study							Levy funded
Vegetated shingle project							£5,000
Preston tracer study							£7,000
CIRIA Groynes in Coastal Management							£5,000
SURGEWATCH							£2,000
Tracer study co-ordination							£2,700
Storm analysis							£25,000
Minor fund projects (2018 - 2020)							£17,000
Bradbury's bursary							£1,500
Improved utilisation of data							£4,000

<https://southerncoastalgroup-scopac.org.uk/>

Research webinars 2021/22

Spring/summer webinar – SCOPAC awards for ‘Utilisation of regional monitoring data research’ 18th June 2021

- Introduction to ‘Utilisation of regional monitoring data award’ – Sam Cope (SCOPAC)
- Introduction to the Regional Monitoring Programme – Charlie Thompson (CCO)
- Swanage Bay Pier wave rex – Charlie Thompson (CCO)
- Kirk Arrow Spit - Alex Hillawi (Coastal Partners)
- Sand dunes in Poole Bay - Lia Bennett (BCP Council)

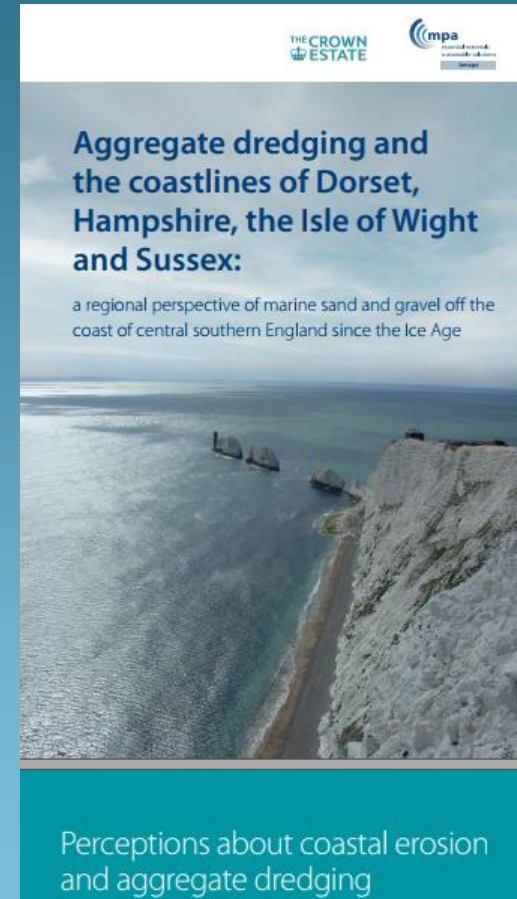
Winter webinar – Latest SCOPAC research updates and Medmerry presentation 15th January 2022

- SCOPAC/EA Digitising the Poole Harbour tide gauge - Naya (UoS)
- SURGEWATCH and sea level rise update - Ivan Haigh (UoS)
- A comparison of SHINGLE-B and XBeach-G for modelling gravel beach profile response by Jake Carley 2020 Bradbury’s bursary winner (UoS)
- EA The unintended consequences of the first open-coast managed realignment site at Medmerry, southern England (August 2013) – Uwe Dornbusch (EA)

Research webinars 2022/23

Spring/summer webinar - Aggregate dredging presentation 20th May 2022

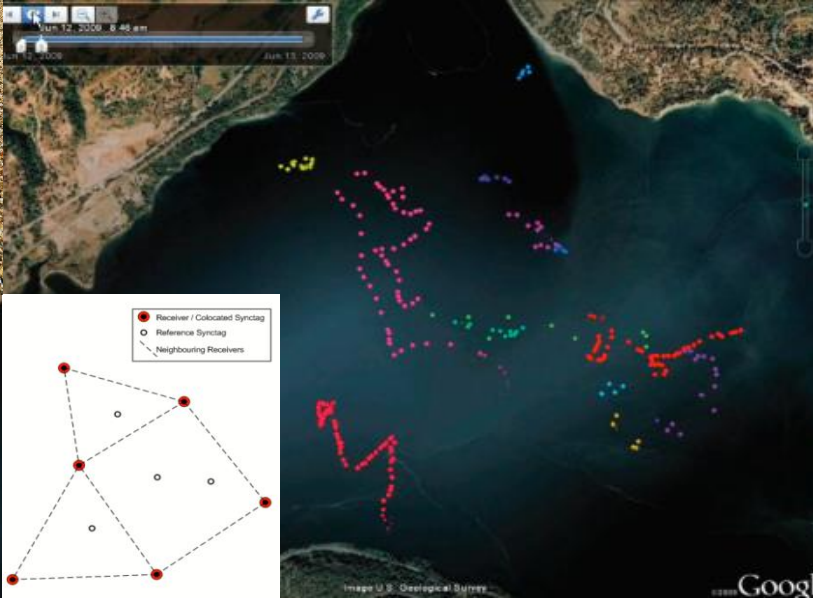
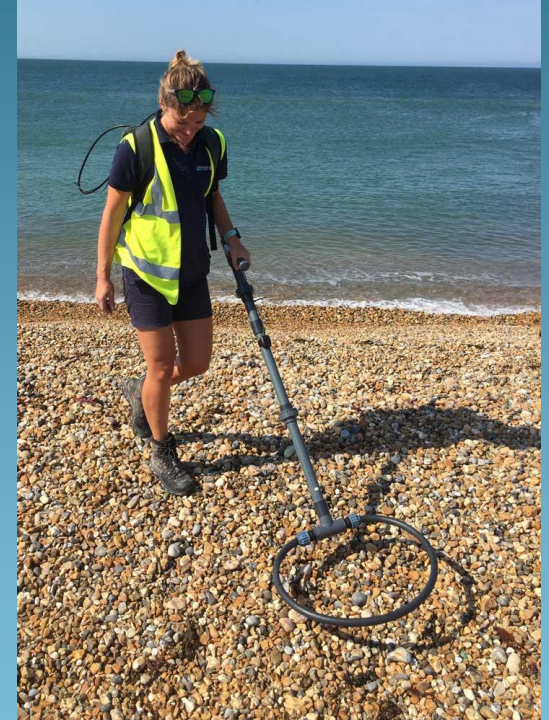
- Crown Estate, BMAPA and Tarmac [brochure](#) launch – Nick Everington, Mark Russell and Andrew Bellamy.



Research webinars 2022/23

Autumn/winter webinar – Tracer studies with SCOPAC contributions **TBC**

- Preston tracer project - Dave Picksley (EA)
- Eastney tracer project - Alex Hillawi (CP)
- West Bay tracer study – Emma Harris/Sacha Neill (CP)
- Acoustic tags update – Sacha Neill (CP)



Annual expenditure	£20,000	£20,000	£20,000	£20,000	£20,000	Project cost	SCOPAC contribution	Other potential contributions/funding sources
Research/project	Financial Year							
	2020/2021	2021/2022	2022/2023	2023/2024	2024/2025			
Bradbury's bursary	£500	£500	£500	£500	£500	£2,500	£2,500	N/A
Improved utilisation of data	Sand dunes	Remote sensing	Dependent on released funds			£5,000	See below	N/A
SURGEWATCH contribution	£500	£500	£500	Dependent on released funds		£1,500	£1,500	N/A
Minor projects								
Ebb deltas Phase I - scoping	£4,000	→				£5,000	£4,000	BMP
Cathodic Protection Performance	£4,000	→	→			£7,500	£4,000	ICE or CIRIA
Acoustic tag trial	£4,000	→	→			£12,000	£4,000	BMP
Remote Sensing	£1,000					£4,500	£1,000	CCO
Sand Dune Development	£1,000					£5,000	£1,000	BMP
West Bay Sediment Transport		£4,000				£20,000	£4,000	BMP
Removing Assets			£4,000	→		£5,000	£4,000	ICE or FCERM R+D
Medmerry Managed Re-alignment				£4,000		£25,000	£4,000	FCERM GiA/FCERM R+D
Vegetated Shingle study Phase II	Dependent on released funds from Protecting Heritage, Ebb delta II or Storm Analysis II					£7,000	TBC	BMP
SCOPAC Landfill champion	Dependent on released funds from Protecting Heritage, Ebb delta II or Storm Analysis II					£5,000	TBC	N/A
Major projects								
Bibliographic database - scanning and update	£5,000	→	£3,000	→	£2,000			N/A
Protecting heritage		£12,000	→	£3,000		£75,000	£15,000	Local Levy
Ebb deltas Phase II - analysis			£10,000	£5,000		£30,000	£15,000	N/A
Potential impacts of dredging in the SCOPAC region				£10,500	£4,500	£30,000	£15,000	Crown Estate/Local Levy
Storm analysis Phase II - Impacts					£15,000	£30,000	£15,000	Local Levy or FCERM R+D
SE Regional Monitoring Programme - where are we now ~20 years on?				Dependent on released funds from Protecting Heritage, Ebb delta II or Storm Analysis II		£50,000	TBC	Combination of SCOPAC and CCO?

Ebb delta study Phase I scoping

£4,000 SCOPAC funding

Emma Harris – Coastal Partners
Dr Matt Wadey – BCP Council

Background

One of the biggest unknowns resulting from the Update of the SCOPAC Sediment Transport Study is the sediment budget at harbour and estuary mouths. There are often difficulties quantifying the sediment budget at these locations given the unknowns surrounding onshore/offshore feed and general feedback mechanisms for ebb deltas. This understanding is particularly important for Beach Management Plan sites.

Aim

Investigate methods available for establishing sediment pathways and volumes between ebb deltas/offshore shoals and the adjacent beaches.



Ebb delta study Phase I scoping

£4,000 SCOPAC funding

**Emma Harris – Coastal Partners
Dr Matthew Wadey – BCP Council**

Background

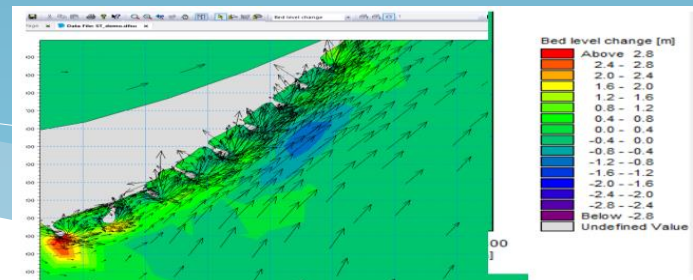
One of the biggest unknowns resulting from the Update of the SCOPAC Sediment Transport Study is the sediment budget at harbour and estuary mouths. There are often difficulties quantifying the sediment budget at these locations given the unknowns surrounding onshore/offshore feed and general feedback mechanisms for ebb deltas. This understanding is particularly important for Beach Management Plan sites.

Aim

Investigate methods available for establishing sediment pathways and volumes between ebb deltas/offshore shoals and the adjacent beaches.

Recommendation

- That BCP Council's MIKE21 model be rolled out to Selsey Bill, covering the IOW
- Sediment Transport module gives the direction and volume of sediment transport (including offshore shoals).
- Shoreline Morphology module provides estimates of sediment transport rates along coastline and offshore transport.
- Wider benefits of having an in-house model - FCERM Strategies, schemes and BMPs.



Annual expenditure	£20,000	£20,000	£20,000	£20,000	£20,000	Project cost	SCOPAC contribution	Other potential contributions/funding sources
Research/project	Financial Year							
	2020/2021	2021/2022	2022/2023	2023/2024	2024/2025			
Bradbury's bursary	£500	£500	£500	£500	£500	£2,500	£2,500	N/A
Improved utilisation of data	Sand dunes	Remote sensing	Dependent on released funds			£5,000	See below	N/A
SURGEWATCH contribution	£500	£500	£500	Dependent on released funds		£1,500	£1,500	N/A
Minor projects								
Ebb deltas Phase I - scoping	£4,000	→				£5,000	£4,000	BMP
Cathodic Protection Performance	£4,000	→	→			£7,500	£4,000	ICE or CIRIA
Acoustic tag trial	£4,000	→	→			£12,000	£4,000	BMP
Remote Sensing	£1,000					£4,500	£1,000	CCO
Sand Dune Development	£1,000					£5,000	£1,000	BMP
West Bay Sediment Transport		£4,000				£20,000	£4,000	BMP
Removing Assets			£4,000	→		£5,000	£4,000	ICE or FCERM R+D
Medmerry Managed Re-alignment				£4,000		£25,000	£4,000	FCERM GiA/FCERM R+D
Vegetated Shingle study Phase II	Dependent on released funds from Protecting Heritage, Ebb delta II or Storm Analysis II					£7,000	TBC	BMP
SCOPAC Landfill champion	Dependent on released funds from Protecting Heritage, Ebb delta II or Storm Analysis II					£5,000	TBC	N/A
Major projects								
Bibliographic database - scanning and update	£5,000	→	£3,000	→	£2,000			N/A
Protecting heritage		£12,000	→	£3,000		£75,000	£15,000	Local Levy
Ebb deltas Phase II - analysis			£10,000	£5,000		£30,000	£15,000	N/A
Potential impacts of dredging in the SCOPAC region				£10,500	£4,500	£30,000	£15,000	Crown Estate/Local Levy
Storm analysis Phase II - Impacts					£15,000	£30,000	£15,000	Local Levy or FCERM R+D
SE Regional Monitoring Programme - where are we now ~20 years on?				Dependent on released funds from Protecting Heritage, Ebb delta II or Storm Analysis II		£50,000	TBC	Combination of SCOPAC and CCO?

Cathodic Protection Study

£4,000 SCOPAC funding

**Alan Frampton – BCP
Rob Thomas – Dorset**

Background

In the SCOPAC region Risk Management Authorities maintain many FCERM assets that comprise steel sheet pile walls. These walls are known to suffer from Accelerated Low Water Corrosion problems, and as such many of these walls use surface corrosion protection systems such as cathodic protection to extend the life of the piles, with varying degrees of success. There is a need to better understand how the scheme design life of these assets can be extended using corrosion protection systems such as cathodic protection in order to maximise investments.

Aim

To focus on experience at Weymouth Harbour as a case-study, where there is range of information about the timber, masonry, concrete and sheet pile wall types that have been installed over decades/centuries in the same system. Thus allowing for ready comparison of the rates of deterioration of steel sheet pile walls to other construction types.

Outputs

Draft report reviewed. Results to be disseminated through future webinar.



Annual expenditure	£20,000	£20,000	£20,000	£20,000	£20,000	Project cost	SCOPAC contribution	Other potential contributions/funding sources
Research/project	Financial Year							
	2020/2021	2021/2022	2022/2023	2023/2024	2024/2025			
Bradbury's bursary	£500	£500	£500	£500	£500	£2,500	£2,500	N/A
Improved utilisation of data	Sand dunes	Remote sensing	Dependent on released funds			£5,000	See below	N/A
SURGEWATCH contribution	£500	£500	£500	Dependent on released funds		£1,500	£1,500	N/A
Minor projects								
Ebb deltas Phase I - scoping	£4,000	→				£5,000	£4,000	BMP
Cathodic Protection Performance	£4,000	→	→			£7,500	£4,000	ICE or CIRIA
Acoustic tag trial	£4,000	→	→			£12,000	£4,000	BMP
Remote Sensing	£1,000					£4,500	£1,000	CCO
Sand Dune Development	£1,000					£5,000	£1,000	BMP
West Bay Sediment Transport		£4,000				£20,000	£4,000	BMP
Removing Assets			£4,000	→		£5,000	£4,000	ICE or FCERM R+D
Medmerry Managed Re-alignment				£4,000		£25,000	£4,000	FCERM GiA/FCERM R+D
Vegetated Shingle study Phase II	Dependent on released funds from Protecting Heritage, Ebb delta II or Storm Analysis II					£7,000	TBC	BMP
SCOPAC Landfill champion	Dependent on released funds from Protecting Heritage, Ebb delta II or Storm Analysis II					£5,000	TBC	N/A
Major projects								
Bibliographic database - scanning and update	£5,000	→	£3,000	→	£2,000			N/A
Protecting heritage		£12,000	→	£3,000		£75,000	£15,000	Local Levy
Ebb deltas Phase II - analysis			£10,000	£5,000		£30,000	£15,000	N/A
Potential impacts of dredging in the SCOPAC region				£10,500	£4,500	£30,000	£15,000	Crown Estate/Local Levy
Storm analysis Phase II - Impacts					£15,000	£30,000	£15,000	Local Levy or FCERM R+D
SE Regional Monitoring Programme - where are we now ~20 years on?				Dependent on released funds from Protecting Heritage, Ebb delta II or Storm Analysis II		£50,000	TBC	Combination of SCOPAC and CCO?

Acoustic Tags Pilot Study

£4,000 SCOPAC funding

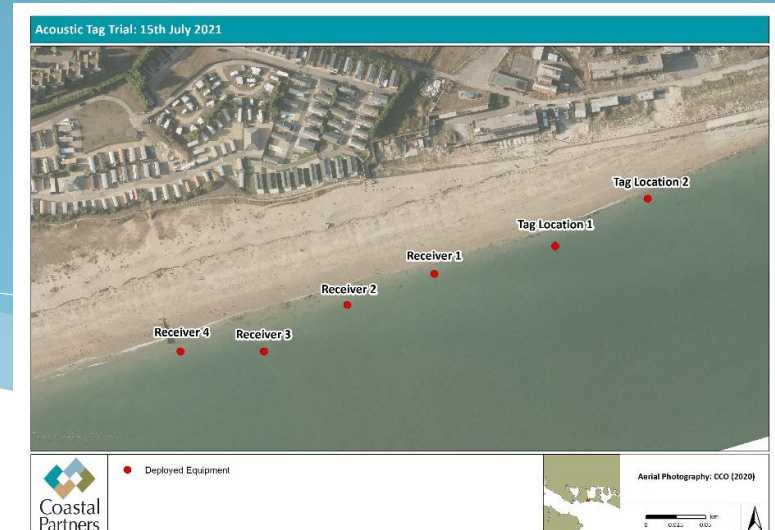
Sacha Neill– Coastal Partners

Background

Following the success of the beach tracer studies, Sacha Neill is developing a new technique using acoustic tags inserted into native beach material to monitor sediment movements in the nearshore zone. A trial study has been completed by Coastal Partners at Eastney Beach which included range testing of different sized tags and an array test designed to test the capabilities of triangulating the positions of the tags from receivers within a grid area. Initial results are looking positive, the data has now been sent to a third party to process.

SCOPAC study aim

Following success of the trial, SCOPAC will provide a contribution to undertake a pilot study on Hayling Island to better understand linkages between the nearshore zone and the beach, linking in with the MIKE 21 modelling and our ebb delta studies.



Annual expenditure	£20,000	£20,000	£20,000	£20,000	£20,000	Project cost	SCOPAC contribution	Other potential contributions/funding sources
Research/project	Financial Year							
	2020/2021	2021/2022	2022/2023	2023/2024	2024/2025			
Bradbury's bursary	£500	£500	£500	£500	£500	£2,500	£2,500	N/A
Improved utilisation of data	Sand dunes	Remote sensing	Dependent on released funds			£5,000	See below	N/A
SURGEWATCH contribution	£500	£500	£500	Dependent on released funds		£1,500	£1,500	N/A
Minor projects								
Ebb deltas Phase I - scoping	£4,000	→				£5,000	£4,000	BMP
Cathodic Protection Performance	£4,000	→	→			£7,500	£4,000	ICE or CIRIA
Acoustic tag trial	£4,000	→	→			£12,000	£4,000	BMP
Remote Sensing	£1,000					£4,500	£1,000	CCO
Sand Dune Development	£1,000					£5,000	£1,000	BMP
West Bay Sediment Transport		£4,000				£20,000	£4,000	BMP
Removing Assets			£4,000	→		£5,000	£4,000	ICE or FCERM R+D
Medmerry Managed Re-alignment				£4,000		£25,000	£4,000	FCERM GiA/FCERM R+D
Vegetated Shingle study Phase II	Dependent on released funds from Protecting Heritage, Ebb delta II or Storm Analysis II					£7,000	TBC	BMP
SCOPAC Landfill champion	Dependent on released funds from Protecting Heritage, Ebb delta II or Storm Analysis II					£5,000	TBC	N/A
Major projects								
Bibliographic database - scanning and update	£5,000	→	£3,000	→	£2,000			N/A
Protecting heritage		£12,000	→	£3,000		£75,000	£15,000	Local Levy
Ebb deltas Phase II - analysis			£10,000	£5,000		£30,000	£15,000	N/A
Potential impacts of dredging in the SCOPAC region				£10,500	£4,500	£30,000	£15,000	Crown Estate/Local Levy
Storm analysis Phase II - Impacts					£15,000	£30,000	£15,000	Local Levy or FCERM R+D
SE Regional Monitoring Programme - where are we now ~20 years on?				Dependent on released funds from Protecting Heritage, Ebb delta II or Storm Analysis II		£50,000	TBC	Combination of SCOPAC and CCO?

Remote sensing

£1,000 SCOPAC funding

Charlie Thompson - CCO

Background

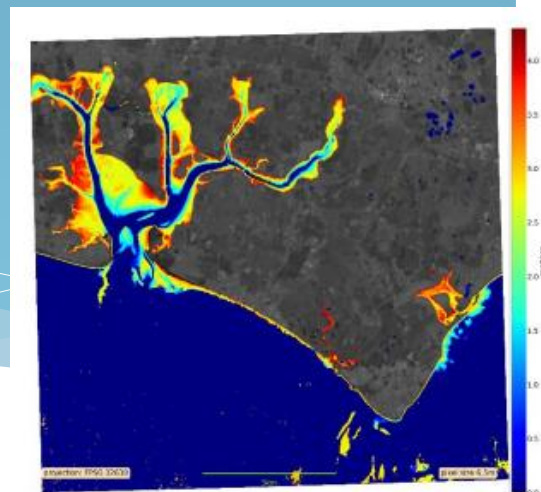
Remote sensing technologies, including Lidar and satellite data products, are often suggested as alternative sources of data to collecting topographic data and bathymetry data on the ground. However, a systematic assessment of the data is required to determine its suitability.

Objectives

- a) Literature review of potential technologies and their strengths and limitations
- b) Using suitable test areas in the SCOPAC region, perform an assessment of available remote sensing data, with comparison to CCO topographic data specifications
- c) full investigation of all products which may have a benefit to coastal monitoring
- d) Limitations of these products

Deliverables

Guidance on the suitability of remote sensing techniques for coastal monitoring.
Development of methodology for combining the data sources.
Case study within the SCOPAC region illustrating the use of these techniques.
Collaboration with other research initiatives.



Annual expenditure	£20,000	£20,000	£20,000	£20,000	£20,000	Project cost	SCOPAC contribution	Other potential contributions/funding sources
Research/project	Financial Year							
	2020/2021	2021/2022	2022/2023	2023/2024	2024/2025			
Bradbury's bursary	£500	£500	£500	£500	£500	£2,500	£2,500	N/A
Improved utilisation of data	Sand dunes	Remote sensing	Dependent on released funds			£5,000	See below	N/A
SURGEWATCH contribution	£500	£500	£500	Dependent on released funds		£1,500	£1,500	N/A
Minor projects								
Ebb deltas Phase I - scoping	£4,000	→				£5,000	£4,000	BMP
Cathodic Protection Performance	£4,000	→	→			£7,500	£4,000	ICE or CIRIA
Acoustic tag trial	£4,000	→	→			£12,000	£4,000	BMP
Remote Sensing	£1,000					£4,500	£1,000	CCO
Sand Dune Development	£1,000					£5,000	£1,000	BMP
West Bay Sediment Transport		£4,000				£20,000	£4,000	BMP
Removing Assets			£4,000	→		£5,000	£4,000	ICE or FCERM R+D
Medmerry Managed Re-alignment				£4,000		£25,000	£4,000	FCERM GiA/FCERM R+D
Vegetated Shingle study Phase II	Dependent on released funds from Protecting Heritage, Ebb delta II or Storm Analysis II					£7,000	TBC	BMP
SCOPAC Landfill champion	Dependent on released funds from Protecting Heritage, Ebb delta II or Storm Analysis II					£5,000	TBC	N/A
Major projects								
Bibliographic database - scanning and update	£5,000	→	£3,000	→	£2,000			N/A
Protecting heritage		£12,000	→	£3,000		£75,000	£15,000	Local Levy
Ebb deltas Phase II - analysis			£10,000	£5,000		£30,000	£15,000	N/A
Potential impacts of dredging in the SCOPAC region				£10,500	£4,500	£30,000	£15,000	Crown Estate/Local Levy
Storm analysis Phase II - Impacts					£15,000	£30,000	£15,000	Local Levy or FCERM R+D
SE Regional Monitoring Programme - where are we now ~20 years on?				Dependent on released funds from Protecting Heritage, Ebb delta II or Storm Analysis II		£50,000	TBC	Combination of SCOPAC and CCO?

West Bay tracer study

£4,000 SCOPAC funding, plus £71,500 local levy

Emma Harris and Sacha Neill –
Coastal Partners

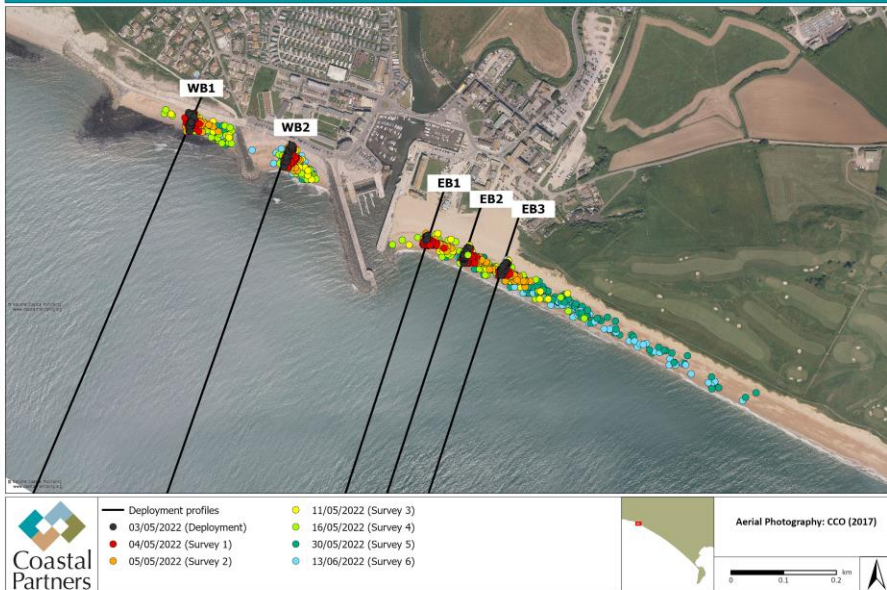
Dorset Council and BCP Council have secured local levy, plus contributions from the EA and Dorset Council to update the coastal process understanding at West Bay to inform beach management activities. Part of this study includes Coastal Partners undertaking a tracer study.

- 1,200 native pebbles collected from site and tracer pebbles prepared over the winter
- Successfully deployed tracer pebbles at 6 locations in May 2022.
- 12 month study. Retrieval surveys 1 – 6 undertaken.

Initial outputs



West Bay Tracer Study 2022 - 2023: Deployment Sites WB1, WB2 and EB1-EB3



West Bay Tracer Study 2022 - 2023: Deployment Site FB1



Annual expenditure	£20,000	£20,000	£20,000	£20,000	£20,000	Project cost	SCOPAC contribution	Other potential contributions/funding sources
Research/project	Financial Year							
	2020/2021	2021/2022	2022/2023	2023/2024	2024/2025			
Bradbury's bursary	£500	£500	£500	£500	£500	£2,500	£2,500	N/A
Improved utilisation of data	Sand dunes	Remote sensing	Dependent on released funds			£5,000	See below	N/A
SURGEWATCH contribution	£500	£500	£500	Dependent on released funds		£1,500	£1,500	N/A
Minor projects								
Ebb deltas Phase I - scoping	£4,000	→				£5,000	£4,000	BMP
Cathodic Protection Performance	£4,000	→	→			£7,500	£4,000	ICE or CIRIA
Acoustic tag trial	£4,000	→	→			£12,000	£4,000	BMP
Remote Sensing	£1,000					£4,500	£1,000	CCO
Sand Dune Development	£1,000					£5,000	£1,000	BMP
West Bay Sediment Transport		£4,000				£20,000	£4,000	BMP
Removing Assets			£4,000	→		£5,000	£4,000	ICE or FCERM R+D
Medmerry Managed Re-alignment				£4,000		£25,000	£4,000	FCERM GiA/FCERM R+D
Vegetated Shingle study Phase II	Dependent on released funds from Protecting Heritage, Ebb delta II or Storm Analysis II					£7,000	TBC	BMP
SCOPAC Landfill champion	Dependent on released funds from Protecting Heritage, Ebb delta II or Storm Analysis II					£5,000	TBC	N/A
Major projects								
Bibliographic database - scanning and update	£5,000	→	£3,000	→	£2,000			N/A
Protecting heritage		£12,000	→	£3,000		£75,000	£15,000	Local Levy
Ebb deltas Phase II - analysis			£10,000	£5,000		£30,000	£15,000	N/A
Potential impacts of dredging in the SCOPAC region				£10,500	£4,500	£30,000	£15,000	Crown Estate/Local Levy
Storm analysis Phase II - Impacts					£15,000	£30,000	£15,000	Local Levy or FCERM R+D
SE Regional Monitoring Programme - where are we now ~20 years on?				Dependent on released funds from Protecting Heritage, Ebb delta II or Storm Analysis II		£50,000	TBC	Combination of SCOPAC and CCO?

Bibliographic Database scanning

Emma Harris - Coastal Partners
David Carter

£10,000 SCOPAC funding

The 2012 Bibliographic Database comprises some 5,700 references to relevant shoreline management reports and publications for the 400 kilometre frontage of the SCOPAC region. The database underpins the SCOPAC Sediment Transport Study (STS) and is updated prior to any STS update.

Originally compiled for SCOPAC in 1989 by the Department of Geography, University Portsmouth, the database was updated in 1992, 1995, 1998, 2002, with the last update in 2012.

Many of the original, valuable old reports and papers were held at the University of Portsmouth, with a risk they could be lost.

- The aim of this project has been to retrieve and then scan and undertake a keyword search for the most valuable documents.
- One of the original authors has now sorted through the documents, prioritising those to be 'saved'.
- Where these are then held or linked to future updates of the Bibliographic Database is TBC.
- Valuable hard copies to be returned to original Local Authority or EA offices. Opportunity to pick up from Havant on the 7th October 2022.



The screenshot shows the SCOPAC website. At the top, the SCOPAC logo is displayed with the tagline 'STANDING CONFERENCE ON PROBLEMS ASSOCIATED WITH THE COASTLINE'. Navigation links include 'Home', 'About SCOPAC', 'Workshops & Events', and 'Research'. The main content area features a 'Bibliographic Database' section with a search bar and a 'Full Records' button. Below this, there is a 'Download the Database' section with a link to download the Access .mdb file (42Mb). The text explains that the database is searchable by topic and/or area, was produced using standard Microsoft Access 2010, and can be modified and extended to suit user requirements.

Annual expenditure	£20,000	£20,000	£20,000	£20,000	£20,000	Project cost	SCOPAC contribution	Other potential contributions/funding sources
Research/project	Financial Year							
	2020/2021	2021/2022	2022/2023	2023/2024	2024/2025			
Bradbury's bursary	£500	£500	£500	£500	£500	£2,500	£2,500	N/A
Improved utilisation of data	Sand dunes	Remote sensing	Dependent on released funds			£5,000	See below	N/A
SURGEWATCH contribution	£500	£500	£500	Dependent on released funds		£1,500	£1,500	N/A
Minor projects								
Ebb deltas Phase I - scoping	£4,000	→				£5,000	£4,000	BMP
Cathodic Protection Performance	£4,000	→	→			£7,500	£4,000	ICE or CIRIA
Acoustic tag trial	£4,000	→	→			£12,000	£4,000	BMP
Remote Sensing	£1,000					£4,500	£1,000	CCO
Sand Dune Development	£1,000					£5,000	£1,000	BMP
West Bay Sediment Transport		£4,000				£20,000	£4,000	BMP
Removing Assets			£4,000	→		£5,000	£4,000	ICE or FCERM R+D
Medmerry Managed Re-alignment				£4,000		£25,000	£4,000	FCERM GiA/FCERM R+D
Vegetated Shingle study Phase II	Dependent on released funds from Protecting Heritage, Ebb delta II or Storm Analysis II					£7,000	TBC	BMP
SCOPAC Landfill champion	Dependent on released funds from Protecting Heritage, Ebb delta II or Storm Analysis II					£5,000	TBC	N/A
Major projects								
Bibliographic database - scanning and update	£5,000	→	£3,000	→	£2,000			N/A
Protecting heritage		£12,000	→	£3,000		£75,000	£15,000	Local Levy
Ebb deltas Phase II - analysis			£10,000	£5,000		£30,000	£15,000	N/A
Potential impacts of dredging in the SCOPAC region				£10,500	£4,500	£30,000	£15,000	Crown Estate/Local Levy
Storm analysis Phase II - Impacts					£15,000	£30,000	£15,000	Local Levy or FCERM R+D
SE Regional Monitoring Programme - where are we now ~20 years on?				Dependent on released funds from Protecting Heritage, Ebb delta II or Storm Analysis II		£50,000	TBC	Combination of SCOPAC and CCO?

Protecting Vulnerable Heritage Assets

£90,000 levy bid; £9,000 SCOPAC contribution

Alex Hillawi - Coastal Partners

Background

There are approximately 50 known coastal heritage assets at risk of flood and coastal erosion within the SCOPAC coastal region. This problem will worsen with climate change and sea level rise. Local Authorities are often seen as the responsible party when it comes to maintenance and protection of these key historic sites, with no clear funding stream. In addition, there are increased costs involved where historic assets are part of an FCERM scheme through licences and consents, materials, sensitive construction techniques etc.

Aim

The project primarily aims to raise the profile of the apparent lack of funding and/or strategy to deal with the problem of protecting coastal Heritage Assets. The scope of the project is to identify heritage assets at risk of flooding/erosion in the region, as well as the possible funding sources. The scale of the issue will be highlighted using a selection of case studies.

A joint levy bid to the Southern and Wessex RFCCs was successful. The project will start July 2022.



SCOPAC Sediment Transport Study update

Background

- Most heavily used piece of SCOPAC research, informing baseline coastal processes for Shoreline Management Plans, Strategies and schemes
- Last update in 2012. New update to incorporate previous 10 years of literature, studies and analysis of regional monitoring programme data.

Proposal

- Suite of studies to inform final SCOPAC STS update: i.e. BCP MIKE 21 model roll out; decadal analysis of geomorphological systems; SCOPAC Storm Analysis update etc.
- Funded by FCERM GiA with contributions from SCOPAC.

For decision

- That £10k of SCOPAC funding be used to scope and write the business case for the next update of the [SCOPAC Sediment Transport Study](#).

