



Report to Southern Coastal Group

September 2020

1. Hydrodynamic Network

Wave Buoys: Rustington DWR underwent a number of electrical works related power outages. Pevensey Bay DWR swapped due to signal issues.

Two AWOL events related to swivels in the moorings have highlighted concerns about this mooring method, which will result in a rolling programme of testing and swapping mooring components. This will be undertaken alongside services to reduce costs, but will result in some services being brought forward a month to reduce the risk of further losses. Datawell have agreed to cover costs of swapping components and shipping.

Tide Gauges: Continued issues with cabling to the Swanage pier WaveRex have prompted potential conversion to a 4G data transfer. Arun platform works have recommenced, but still troubleshooting. Both Arun platform and Lymington may need significant remedial works to their installations soon.

2. Topographic Survey

Delayed Spring surveys have now been completed. The biggest impact is to Sandown baseline which had to be replaced by interim profiles, and it may not be possible to accommodate a baseline this year though a provisional date had been set in November. Autumn surveys are underway with a view to maximising the amount of time since the delayed spring surveys.

3. Bathymetry

Single beam bathy survey at Hayling is planned. Additional surveys for 5fSU02 completed for navigational info for rock barge entry, and request for survey 5cSU18/19 for Keyhaven river.

4. Aerial

Aerial capture has restarted for ASE04, with Portsmouth, Langstone and Chichester Harbour left to capture.

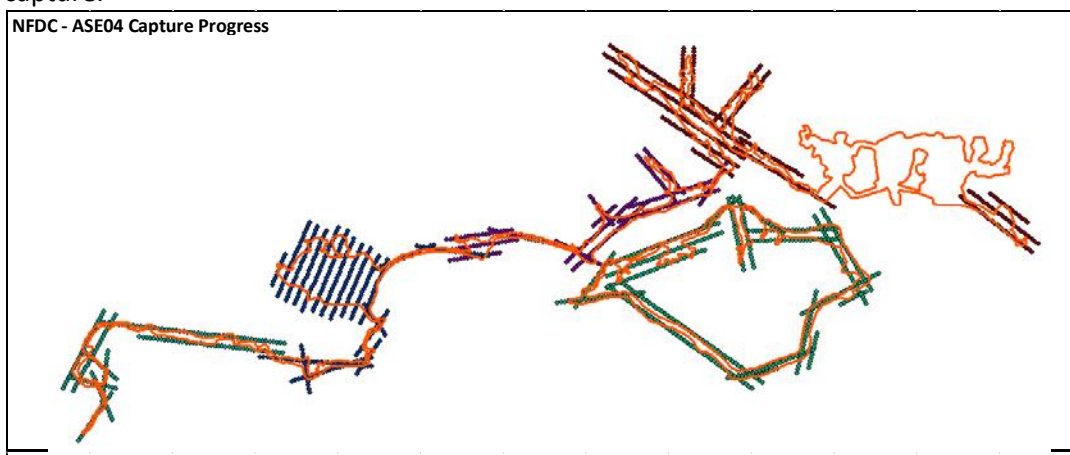


Figure 1 Aerial Capture for ASE04 to date

Capture for ASE03 was done earlier this month, which should allow capture to MLWS for the majority of ports. An agreement to relax the tidal limits has been made for the remaining ports, but flights on these dates should minimise loss to ~20cm from MLWS.

5. Lidar

All preliminary Lidar has now been received and is undergoing QC.

6. UAV

COVID-19 highlighted the benefits of the UAV, which required fewer surveyors. It has been used to survey 5fSU02 (Milford), 5fSU01 (Hurst), 5fSU19 (North Point) and 5fSU13 (Whitley Lake, Poole Harbour).

7. Website

Downloads during Q2 of 2020 have seen an uptick, averaging £5.2M (Figure 2) offsetting reductions seen in the first quarter of 2020. The increase appears to be driven by particularly high increases in Lidar, Aerial photography and Bathymetry downloads. The main users of these datasets appear to be university students and university research. This may reflect final year projects, or an increased use of archived data for teaching and research during the lockdown period.

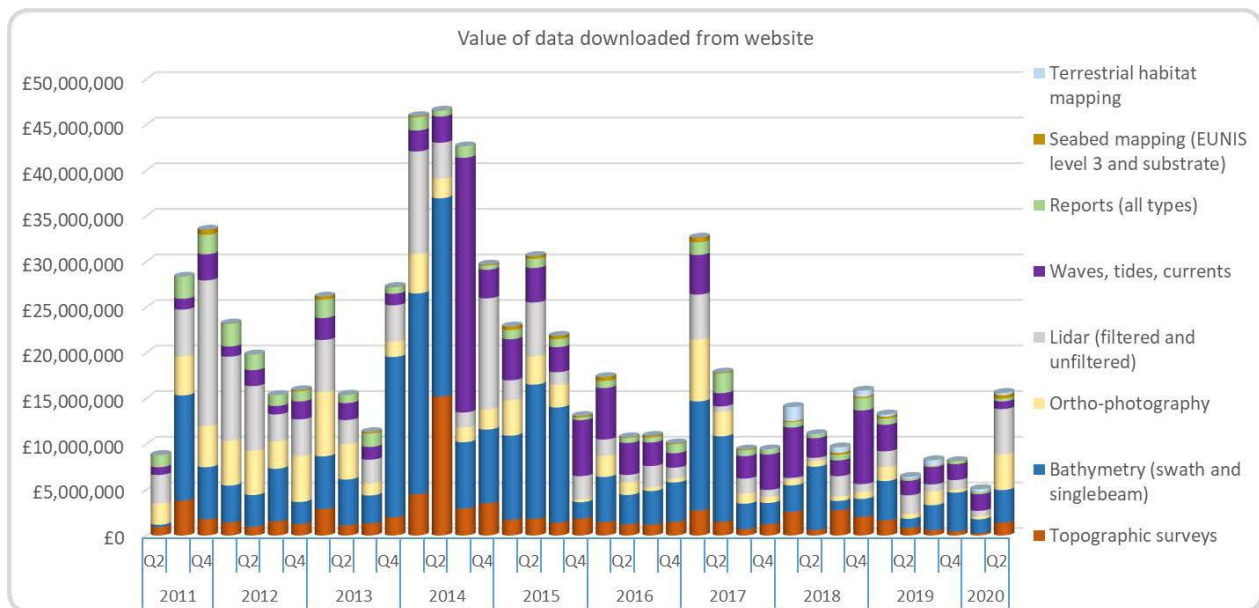


Figure 2 Data value of southeast regional data to end of Q2 2020

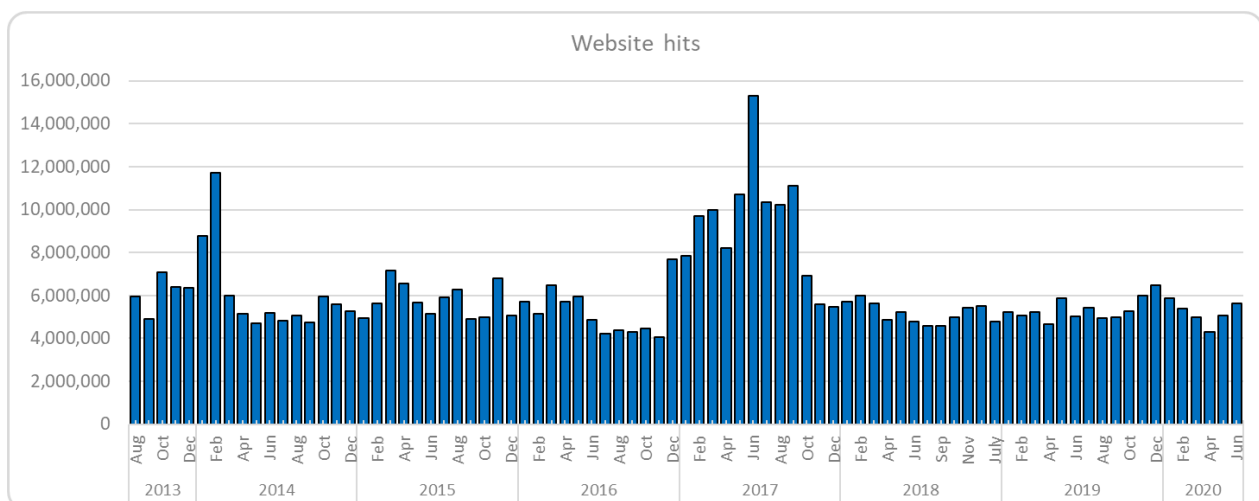


Figure 3 Number of hits on CCO website

8. General

The Southeast Regional Coastal Monitoring Programme this year will be held on Wednesday 14th October as an online conference. The morning session will be a series of presentations with the afternoon consisting of discussion workshops.