

Secretary: Havant Borough Council
Public Service Plaza, Havant,
PO9 2AX

Enquiries Nicholas Rogers
Tel: 023 9244 6233
E-mail: nicholas.rogers@havant.gov.uk

20 June 2016

Dear Sir or Madam

SOUTHERN COASTAL GROUP

Date: 24 June 2016

Time: 10.00 am

Place: Hollybank Room, Public Service Plaza, Civic Centre Road, Havant, Hants
PO9 2AX

Please see the attached location map showing Havant Station, routes to Havant Public Service Plaza and location of car parks. If you are unable to attend please contact Nicholas Rogers as soon as possible by e-mail or telephone.

Yours faithfully

Nicholas Rogers
Havant Borough Council

AGENDA

- | | | |
|---|--|----------------|
| 1 | Apologies | |
| 2 | To confirm the minutes of the meeting of the Southern Coastal Group held on 11 March 2016 (Paper A) | 1 - 6 |
| 3 | Update on Coastal Issues (Paper B) | 7 - 20 |
| 4 | Report on 2015/16 Financial Year and Recommendation for Subscriptions (Paper C) | 21 - 36 |
| 5 | Research Update (Sam Cope - Paper D) | 37 - 42 |
| 6 | SMP Action Plans | |

To receive Presentation from Neil Watson, Southern Coastal Group Chairman, and Stuart Terry, Coastal Engineer from the Borough of Poole.

7 **CIP Refresh Partnership Funding (Nick Gray - Paper E)**

To receive an update from Nick Gray, Environment Agency

8 **Regional Habitat Creation Programme Update (Nick Gray - Paper F)** **43 - 48**

9 **Identification of Theme Leads within the SCG Business Plan**

10 **Procurement of a Professional Services Framework**

To receive a verbal report from Lyall Cairns, Head of Coastal Partnership

11 **Coastal Monitoring Update (Steve Cook - Paper G)** **49 - 50**

12 **Coastal Asset Data**

13 **SMP-Wide Beach Management Plan**

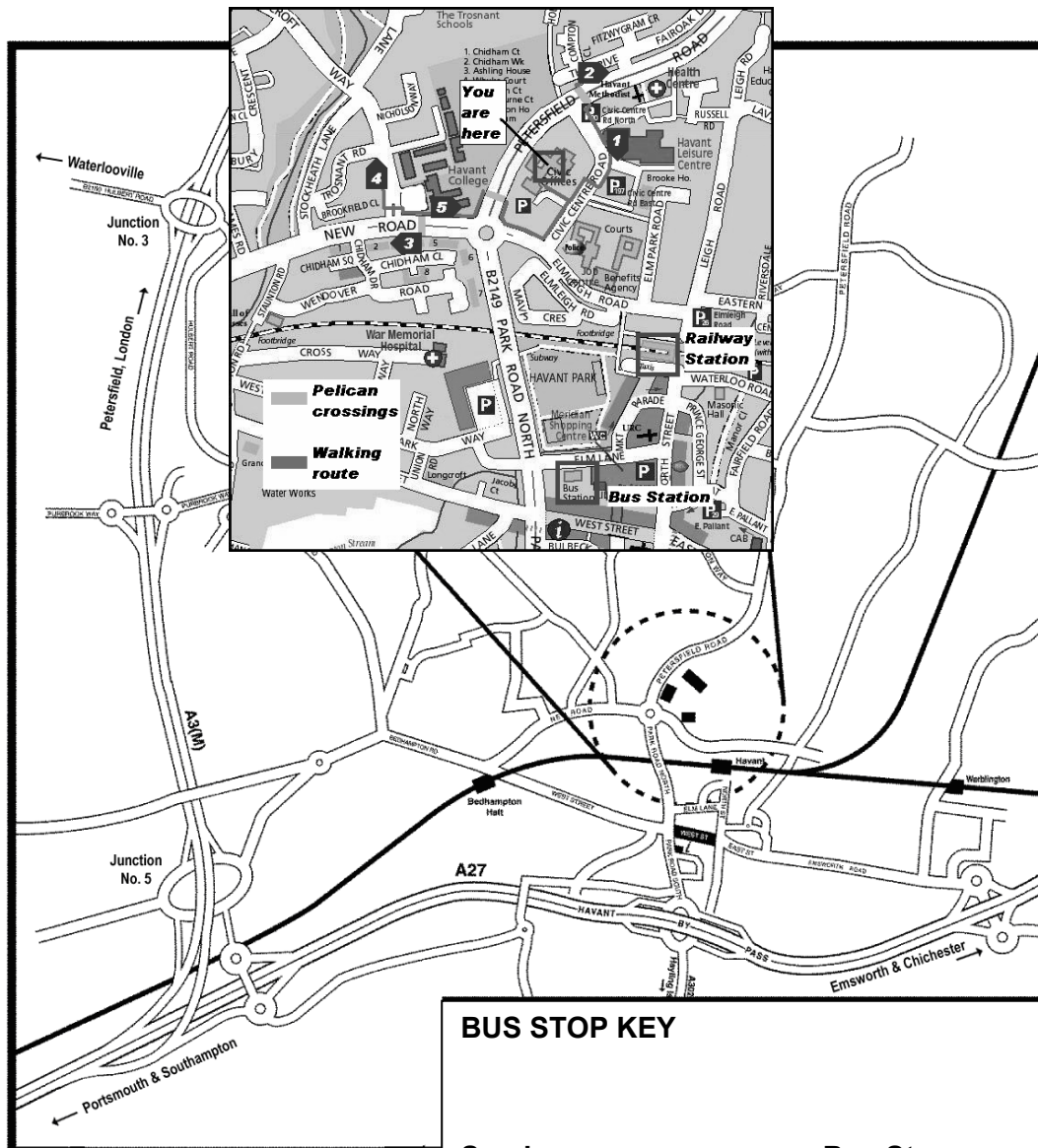
14 **Theme for Future Practitioners' Workshop**

15 **NCERM Validation**

To receive a verbal report from Neil Watson, Southern Coastal Group Chairman

16 **AOB**

17 **Date of Next Meeting 23 September 2016**



BUS STOP KEY

Services	Bus Stop
20, 21, 39, 63	1
20, 21, 36**, 39	2
23, 36**	3
23, 27**, 37	4
23, 27**, 36**, 37	5



Havant
BOROUGH COUNCIL

Public Service Plaza
Civic Centre Road
Havant
Hampshire PO9 2AX

This page is intentionally left blank

HAVANT BOROUGH COUNCIL

At a meeting of the Southern Coastal Group held in on 11 March 2016

Present:

Jack Caine, Havant Borough Council
Steven Cook, New Forest District Council
Dr Samantha Cope, New Forest District Council
Dr Uwe Dornbusch, Environment Agency
Mr Mike Goater, Purbeck District Council
Mr Matt Hosey, Eastern Solent Coastal Partnership
Karen McHugh, Solent Forum
Mr David Robson
Nicholas Rogers
Mr Neil Watson
Mr Gordon Wilkinson, Eastleigh Borough Council
Mr Steve Woolard, Christchurch Borough Council
Mr Dominic Henly, Chichester District Council
Mr Nick Gray, Environment Agency
Mr Keith Nurse, Environment Agency

65 Apologies

Apologies for absence were received from Lyall Cairns, Bret Davies, Eleanor Blundell, Julia Potter, Nick Hardiman, Stuart Terry, Tim Adams, Sarah Cairns, Jenny Jakeways, Angela Marlow, Stevyn Ricketts, Sam Foulds, Guy Mason and Bernadine Maguire.

66 Minutes of Previous Meeting and Matters Arising (Paper A)

It was RESOLVED that the minutes of the meeting of 11 December 2016 be set as a correct record.

67 Chairman's Update & Dissemination from National Coastal Chairs (Neil Watson - Paper B and C)

The Chairman introduced the paper to the officers and outlined its content. The outline included:

- An update on the progress of the Asset Coast asset management system, which had been implemented in Canterbury. Information regarding the 7 April Asset Coast workshop would be circulated at a later date. Officers discussed the benefits and differences between Regional asset management systems and National asset management systems. Officers discussed the possibility of a workshop session on this topic.
- SMP Action Plan Updates
- Habitat Creation Programme

Neil Watson gave a presentation on Residual Uncertainty Allowance, which outlined the impact of freeboarding and mitigating unknown coastal defence factors. Presentation slides would be circulated to officers.

The Group discussed the provisional workshop date in June 2016 on Efficiencies and a possible clash with a London workshop on a similar subject. It was agreed the Group would investigate alternative topics for discussion for the June 2016 workshop.

68 National Coastal Monitoring Programme Update (Paper D)

The Chairman asked Steve Cook to introduce the report to officers and give an update on the National Coastal Monitoring Programme.

Officers discussed requests for additional surveys and work not included in the baseline and the need to ensure this is monitored. There were concerns raised over inconsistency within these additional tasks and possible overlaps in workloads. Officers agreed to approach the Project Board for Coastal Monitoring to identify if any guidance had been issued.

69 R&D Programme Update (Sam Cope - Paper E)

Dr Samantha Cope gave an overview on the progress of the Research Programme. The update included details of ongoing research projects and those that had reached completion.

The following studies were discussed:

- Coastal Sediment Budget Project - The report will be circulated to the Research sub-group before being uploaded to the SCOPAC website.
- Establishing shingle transport pathways – Church Norton Spit – 100 pebbles have had radio frequency ID tags inserted and will be deployed in March. A recent painted pebble test produced encouraging results.
- Beach response in front of structures in open coast – scour chain exercise would take place in Stokes Bay and similar tests to be arranged across the region.
- Monitoring of Poole Nearshore Replenishment Trials – The final topographic and swath bathymetry surveys will be completed by the end of March 2016 with a view to producing a report in June.
- Scanning of Historical Aerial Photography – An exercise was underway to collate local authority photography. Officers were encouraged to send information on known aerials to the project.
- Dismantling of Timber Groynes at Bournemouth Borough Council – 5 out of 10 groynes have been dismantled with a view to the analysis by TRADA starting soon.
- Maintenance of Coastal Structures – Phase 1: Timber Groynes – Provisions have been set aside in the SCOPAC business plan to cover this work if not covered by the joint Defra and EA FCERM R&D programme. Further information would be provided when available.
- SCOPAC Sediment Transport Study
- Reducing Regional Flood and Erosion Risk from Wave Action on the Channel Coast Project – A workshop will take place on the 28 June 2016.

70 Storm Damage Reports from Members

The Chairman updated the group on the effect the recent storms that had affected the area. The recent storms had affected sea defences already vulnerable from the 2014 storms and as a result, materials had been diminished considerably.

Officers discussed an 'index of vulnerability', a monitoring exercise to understand the damage sustained by seawalls and map this out across the area. Officers also discussed the lack of post-storm surveys conducted, which made it difficult to quantify damage.

It was agreed that officers would review and update the spreadsheet with data from their respective coastal areas and this would form a substantive item on the agenda of the next meeting of the SCG.

71 SCG Budget Profile and Action Plan Priorities

The Chairman invited Karen McHugh from Solent Forum to introduce the Marine Consents Guide Funding Request to the Group.

The Marine Consents Guide was looking to publish a fourth edition, which would update the third edition from 2012 with details of the Marine and Coastal Access Act 2009. It was advised this document was useful for small and medium-scale licence applications and had a good response from those that used it. Officers were invited to comment and ask questions to Karen on this request.

The Group agreed they were supportive of this initiative and would match appropriate funds as part of the 2017/18 business plan.

72 Coastal Modelling & Forecasting Services

The Chairman invited Keith Nursey from the Coastal Modelling and Forecasting Team to deliver a presentation to the Group on the role and functions of his team. The presentation outlined the following points:

- Forecasting Delivery Plan
- The Coastal Modelling and Forecasting Team structure
- The national coverage of the Team
- Priorities to improve service
- Examples of the work the Team carries out

The presentation also outlined the importance of maintaining dialogue with the Team at early stages of project work.

73 Supporting Delivery

The Group discussed the strategic objectives of the Southern Coastal Group and how best to support these objectives.

Neil Watson discussed the Capital Programme and Medium Term Plan refresh and advised the group on the progress of the plans. As there was capacity on the Programme for more work, Neil advised officers to bring forward any projects in the development stage from the 2016/17 to the current programme.

Matt Hosey was invited to provide the Group with an update on efficiency targets within the SCG. Matt suggested using an SCG session for officers to share key areas on efficiency targets. Officers discussed suitable alternatives for the provisional workshop slot booked in for June 2016.

Additionally officers were advised on the progress of the procurement of the New Professional Services Framework. Bids had been received from 12 bidders and these were in the process of being evaluated with a view to provide a preferred bidder by the start of the new financial year. It was agreed that Matt Hosey will provide a presentation on this at the next SCG meeting.

74 AOB

Officers were advised that the next meeting date would be 24 June 2016 with a provisional afternoon workshop on a subject to be decided.

The meeting commenced at 10.00 am and concluded at 12.34 pm

This page is intentionally left blank

Coastal Overview Refresh

Update on progress and plans

27th April 2016

In April 2015, the Environment Agency agreed with Coastal Group Chairs and Defra to work together to review how its coastal Strategic Overview is working seven years on.

The coastal Strategic Overview

Defra gave the Environment Agency a Strategic Overview for coastal flooding and erosion in April 2008, which was reflected in the Floods and Water Management Act 2010. The 'Coastal Overview' is about more than the provisions of legislation, however. It is fundamentally about how we work together with other authorities, organisations and people living and working at the coast to make coastal risk management more sustainable and cost-effective well into the future. Its four key principles are:

- **setting the direction** for how coastal flood and erosion risk is managed, by helping to develop, assure and approve Shoreline Management Plans (SMPs) and associated Strategies;
- ensuring this strategic direction is delivered, by **approving investment and allocating grant**;
- facilitating enhanced **partnership working** at the coast, particularly through Coastal Groups and Regional Flood and Coastal Committees;
- **responding to the needs of communities** by improving understanding of risk, making roles and accountabilities clear and helping to engage them in decision-making.

The Coastal Overview does not mean we do everything, but that we have a good understanding of how things are done, and will work with others to get them done better.

Successes and challenges

The last seven years has seen a range of successes in a changing legal, administrative and policy atmosphere. Strategic Coastal Groups are well-established. The full suite of SMPs is published, with much further work to explore their delivery, and protocols for SMP monitoring, reporting and change. The Regional Coastal Monitoring Programmes have become fully networked into a national programme. A coastal research framework has been established, and erosion information modelled and mapped consistently alongside online flood maps. Coastal management accountability has been mapped and funding, licensing and legislation clarified. Government has involved Risk Management Authorities in trialling spatial planning and adaptation mechanisms in areas at high risk.

The challenge now to invest in these achievements so that current decision-making continues to speak directly to strategic priorities. There have been developments, such as Partnership Funding, Flood Risk Management Planning and the recently renewed drive to work with natural processes, which may affect how we do this. The financial landscape has also changed, as has the structure of Government agencies in Defra.

The Coastal Overview 'Refresh'

Environment Agency managers and advisers came together in March 2015 to discuss how the coast could be treated more cohesively across the organisation, and the key coastal issues that need addressing. In discussion with Defra and Coastal Group Chairs, three main themes emerged below that would form the subject of a 'refresh' of the Coastal Overview, namely auditing and improving our collective understanding of risk, governance around strategic coastal management, and preparedness for coastal incidents. Progress and proposed onward priorities for 2016/17 are outlined below.

Understanding of Risk

Coastal Refresh desired outcomes:

1. Local authorities and Defra are confident we have a meaningful Strategic Overview of coastal asset condition and ownership. Local authorities have an improved understanding of their own assets and those of neighbouring authorities. CAMC includes a clear plan for how we intend to store and maintain local authority and private asset data at the coast. An interim solution for this is designed and applied that is consistent with AIMS.

PROGRESS:

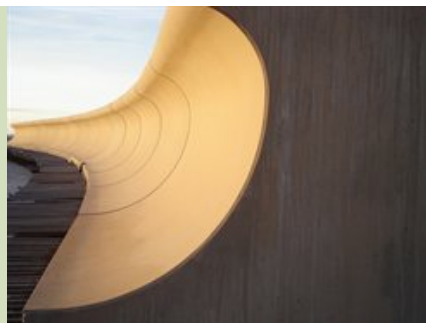
- First annual update of National Coastal Erosion Maps (NCERM), which incorporate summary coastal asset data that have now been supplied to the 'State of the Nation' review of assets and risk following the storms of 2013/14.
- EA Asset Performance discussion with Coastal Group Chairs and EA Strategy Delivery on potential pathways to capture non-Environment Agency assets in the Asset Information Management System (AIMS) during the third phase of Creating Asset Management Capacity (CAMC3) and beyond.
- Interim solutions to improving consistency and access to asset management systems explored with Coastal Group Chairs, including a brief audit of initiatives around England and early scrutiny of the JBA Asset Coast system.

POTENTIAL ACTIVITIES 2016/17:

Summary audit of coastal asset data systems with access requirements and common data parameters identified.

Clarification, and potentially escalation, of the approach to:

- 'orphan' coastal defence assets;
- infrastructure performing a FCRM function not on asset registers.



2. Coastal Risk Management Authorities and Defra have a clear view of where coastal data can be found, their reliability and plans for data improvement. Data access barriers are resolved. SMPs are maintained according to a reliable and improving evidence base.

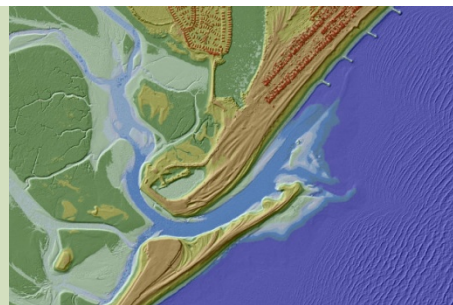
PROGRESS:

- New National Coastal Monitoring Programme five year investment phase with indicative allocation of £23 million to 2020/21, involving improved capture of data usage.
- iCoasst project improving modelling and mapping of decadal geomorphic change over large scale estuarine and open coast areas completed with final work package on dissemination underway.
- EA Modelling and Forecasting developing coastal data/modelling standards within new coastal team.
- Coastal data sets (and AIMS) identified as candidates to become Open Data in June 2016.

POTENTIAL ACTIVITIES 2016/17:

Coastal data 'map' with accessibility requirements.

Identification of coastal data and R&D needs beyond asset systems through Coastal Research Steering Group.



3. We are collectively able to articulate a comprehensive and well-informed narrative of coastal risk in England to Government, and colleagues understand relative priorities for investment, communication and further study. We are able to work pro-actively to manage communications and expectations in

priority areas where SMP management policy may change in future. SMP action plan reporting is improved so that it captures the meaning behind the figures for future s18 reports to Defra. We have a better understanding of the risks to more generic aspirations set out in SMPs.

PROGRESS:

- Open discussion of risk 'hotspots' within SMPs via Coastal Groups captured in draft.
- SMP Action Plan reporting to capture general overview of past five years.

POTENTIAL ACTIVITIES 2016/17:

Systematic summary review of risk of non-delivery of SMPs, including audit of Action Plan reports.

Short, accessible SMP-by-SMP summaries of risk for managers, Government and other internal use.

Production of government mandate for coastal adaptation measures explored in Coastal Change Adaptation Pathfinders



4. SMPs remain the key reference point for coastal communities and practitioners. The FCRM community reaches a common approach to the review of SMPs, on the basis that they remain 'living documents' that can be changed according to a clear and auditable process.

PROGRESS:

- Update of SMP Monitoring, Reporting and Change Process.
- Promotion of SMP system to Government ministers and internationally.

POTENTIAL ACTIVITIES 2016/17:

Low-maintenance Central Coastal Group Network website to host SMPs (or links to them) in a clear, accessible and up-to-date way, alongside monitoring/reporting/challenge/change information.

Brief public-facing summaries for each SMP.

Audit and update of Coastal Group websites.



Governance

Coastal Refresh desired outcomes:

1. Within the Environment Agency's work on the coast at Head Office, duplication is removed, gaps filled and there is a spread of 'ownership' of different communications/engagement channels on coast. The relevant internal and external people are informed of the relevant things on the coast and resource is effectively prioritised.

PROGRESS:

- Establishment of a broad coastal inter-directorate network with introductory workshop in November, and an overall coastal management portfolio owner in Pete Fox and lead in Environment & Business Estuaries & Coasts team.
- Establishment of Area FCRM Manager coastal portfolio but now under review.
- Completion of full Area 'Coastal Business User Group' internal network within the Community of Practice landscape, with skills and capacity details, monthly calls and Yammer group.

POTENTIAL ACTIVITIES 2016/17:

Establishment of closer FCRM Head Office coastal hub between Strategy Delivery, Asset Performance, Evidence, Modelling & Forecasting, Incident Management and NEAS.

CBUGs becomes self-managing.



2. Coastal Groups have a common understanding of how each Group works, how they complement each other, and where more consistency would be beneficial. We, and Defra, can be confident that Coastal Groups can maintain SMP information, and communicate their content and implementation effectively to the public and to elected members. National guidance on Coastal Groups is fit for purpose.

PROGRESS:

- Review of Coastal Group Terms of Reference by Coastal Group Chairs, with succession planning and coastal contacts documents.

POTENTIAL ACTIVITIES 2016/17:

Amendment of Coastal Group Terms of Reference if necessary, and publication on Coastal Group Network website.

Audit of Coastal Group maintenance of SMPs, with support for ensuring governance is in place.

Update to maps of Coastal Groups, constituent members and SMPs for communications.

Review of skills, resource and capacity in Coastal Groups.



Incident Management

1. Risk Management Authorities have the information and resources required to managed coastal incidents and recovery effectively. This work is being led by EA Incident Management.

NICK HARDIMAN, SENIOR COASTAL ADVISER, EA STRATEGY DELIVERY

National Coastal Group Network - Update

Update on issues and items of interest

June 2016

Introduction

Whilst the format of this update is similar to those previously produced by the Agency, this one is different. Due to the happy news of Nick Hardiman becoming a father for the second time I, as the Chairman of the Coastal Group Network, have picked up from Nick in a bid to keep the flow of information going. My thanks first to Nick for the opportunity and secondly all our best wishes to you and your family.

The news for this edition is a little scant but as you will see there is a lot is going on and a lot to be done. To save time I have attached one or two other documents to widen the scope of this update. Looking forward if you have any items news, knowledge sharing or best practice of national significance please let me know and I will try to include it in future editions on a quarterly basis.

The Coastal Strategic Overview Refresh

In April 2015, the Environment Agency agreed with the Coastal Group Chairmen and Defra to work together to review how its strategic overview is working seven years on. Work has been underway and this informal programme of work is being coordinated by the Environment Agency national Strategy Delivery team and Chairman of Coastal Group Network. There are many strands which reflect a variety of needs, but they broadly fit under three main work areas that reflect the key concerns of coastal Risk Management Authorities (RMA) and key roles of Coastal Groups:

- 1) Understanding of Risk: developing a more systematic national picture of risk in SMPs, including risk 'hotspots'.
- 2) Governance: developing a more coherent coastal community within the Environment Agency to ensure greater common understanding of coastal work priorities.
- 3) Incident Management: ensuring systems are in place to improve the way we plan for and respond to coastal incidents.

The over-arching aim is to ensure the Environment Agency's Strategic Overview is fit for purpose in terms of the information we have, and the governance and relationships that enable that information to be used for everything from strategic planning to monitoring, scheme delivery, communications and incident response.

This work has been underway for the past year and will continue into 16/17, including a focus on SMP governance in Coastal Groups.

The Shoreline Management Plan (SMP) Action Plan Updates

With the deadline for last year's updates on the progress on the implementation of the SMP Action Plans now past it is now time to be ready and in good time for next year by getting to grips with the updates for 2016/17 now. This is something that is at the core of our business so now is a good time to start so that we may be in a position to have these done earlier and be more proactive.

The Environment Agency reports annually to Defra on the progress of SMPs as part of the statutory reporting on the national FCRM Strategy under S 18 of the Flood & Water Management Act. From many discussions it is clear that all the groups seem to be dealing with this in different ways and now would be a good time to pool practice and ideas and learn from each other. To this end the Chairman of the Network

will be contacting the various chairman to arrange a knowledge sharing event of interested parties undertaking this work.

The National Coastal Monitoring Programme

The National Coastal Monitoring Programme allocation for 2016/17 has now been fully approved with an indicative allocation (£23 million to 2020).

Note that the Southeast's funding will no longer be offset by a year and in future all Regional Programmes will operate over the same 5-year period. Funds for LIDAR have been removed from the direct control of the Regional Programmes, and instead their required LIDAR will be delivered directly by Environment Agency Geomatics Group as an in-kind benefit. The Specification will remain the same as used in the current phase.

National Coastal Erosion Risk Mapping (NCERM)

Work on the last of updates for 2015/16 is being completed now and a big thanks to all of you that responded and have assisted with this work. The next update is scheduled to start in September so please can you all of you start to assemble the data needed now and not wait until the last minute. Whilst I know how hard this is it is better in the long run. For those of you that don't want to maintain your own websites for viewing erosion risks in your areas this is probably your best alternative. These maps sit alongside the flood risk mapping and give the best national coordinated view of the main risks on the coast.

Opportunities for AIMS Compatible Database Implementation

There are now very affordable products available which could assist coastal RMAs with asset management and inspections. This clearly has potential benefits in assisting delivery of the Coastal RMA element of the 6 year programme and also to give a complete picture of coastal assets for state of the nation reporting.

Following on from discussions at the coastal chairs meeting in Llandudno. The Agency are actively exploring the viability of implementing a national project to use FDGIA to find purchase and implementation of such a product for use by coastal RMAs (if required)

Coastal chairs are asked to feedback on numbers of RMAs with a current requirement for such a product.

Feedback

On 7th April a successful seminar was held in London to showcase and obtain feedback on the development of Assetcoast.

JBA and Canterbury City Council invited Coastal Group members to attend a workshop to discuss the new coastal asset management system AssetCoast. The system was developed to support RMA's with the management of their coastal assets.

The AssetCoast system utilises innovative data capture techniques, risk analysis tools and visual presentation aids and presents all data on a web based platform. This approach analyses the effects of waves, tides and surges on infrastructure and property receptors through coastal erosion, wave overtopping and still water level flood risk mechanisms (incorporating the physical condition of the defence). Risks are analysed in the present day and for three future time epochs (2025, 2055, and 2115) to aid long term investment planning.

The seminar and workshop provided an opportunity to discuss the new system with RMA coastal asset managers and includes presentations and demonstrations from both Canterbury City Council and JBA.

As you will be aware this is not the only system on the market and I hope that we can get a full list together with pros and cons as soon as possible.

It was realised that such seminars aren't always easy for all coastal group members to attend so if there is suitable demand a similar seminar in your area could be possible please liaise with your coastal group Chairman regarding interest.

Conferences, seminars and lectures

For those of you that are members of the Local Government Association (LGA) Coastal Special Interest Group don't forget the Annual General Meeting & Knowledge Sharing Event on 15-17 JUNE 2016

Places are limited. To book your place, please contact Coastal SIG Co-coordinator, Lucy Williams by email at lucy.williams@eastssuffolk.gov.uk. For further information see: <http://lgacoastalsig.com/news-2> Also attached is a copy of the LGA Coastal Special Interest Group Newsletter Spring / Summer 2016

CIWEM RCG Winter Meeting - Policy and delivering efficiencies? "Can we deliver more for less?" – The challenges - When: 26th January 2016 - Where: Hamilton House, Euston, London.

Aim - Last year following the government's introduction the welcomed 6-year funding settlement for Flood and Coastal Erosion Risk Management (FCERM) work, from £370m this year to over £400m in 2020/21. The increased funding and the opportunities it provides come with a price. The cost of this is that we need to demonstrate efficiency improvements of 10% in delivering this programme.

Although it is part of our routine day to day work to provide efficient, best value outputs this applies across the board to not only the Environment Agency (EA) but all other Risk Management Authorities (RMA) delivering FCERM schemes in the 6 years period up to 2020/21. In order to demonstrate that we are achieving these targets we will have to measure and record them which is something that many in the industry have not previously done.

In parallel with this we will also need to demonstrate that we are continuously improving efficiency and value for money.

This workshop will bring together all stakeholders to share and discuss the issues, policy and exchange their knowledge as how we can best achieve this. Details on CIWEM website.

Coming soon:

In July 2016, CH4M will be launching new tools in SANDS including a mobile app for capturing defence asset data in the field and merging this with your SANDS database once back in the office. This will be part of the next round of SANDS updates so if you already have a SANDS licence it will be free of charge to those with a valid support and maintenance agreement. You would just need to purchase iPads to install and run the App on.

The attached "CH2M FACTSHEET_SANDS Mobile App - Coming Soon" provides fuller details of these forthcoming developments.

In addition, I also attach the "CH2M FACTSHEET_SANDS for Asset Management" which provides a broad overview of what can already be achieved with SANDS in terms of coastal defence asset management.

Call for help:

Groyne Management – A call for concerted action – paper attached

This paper calls for a concerted approach to the gathering of data and information Please help get this work underway by completing the survey at www.ciria.org/groynes

Bryan Curtis, Chairman of the Coastal Group Network

This page is intentionally left blank

REVIEW OF COASTAL GROUP TERMS OF REFERENCE: SUMMARY FINDINGS

- Coastal Groups continue to embody the partnership working envisaged by the adoption of a Strategic Overview of coastal flood and erosion management in 2008.
- They have successfully streamlined their structure, becoming larger and more strategic, although in some cases the pre-existing Coastal Group structure has remained in place in some form, especially for the purposes of SMP development or maintenance.
- However, some Coastal Groups are experiencing challenges attracting members to strategic quarterly meetings due to increasing problems of perceived cost-benefits associated with travel and time, or in a minority of cases due to lack of staff altogether.
- Coastal Groups have adopted broadly consistent Terms of Reference but funding structures differ widely, and the core focus and character varies. There is scope to better align these to ensure key Coastal Group activities can continue in a more easily co-ordinated way.
- The variety within Coastal Groups is also a strength, with each being responsive to the issues and dynamics of the area covered. There could be more sharing of the best characteristics of each.
- The key provisions within the Terms of Reference have been met, but there is room for further work around interaction with central government on policy development, and interaction with RFCCs to influence the investment programme.
- The list of initiatives in which Coastal Groups have been involved is long, and they remain key repositories of coastal expertise that link technical capability with strategic thinking.
- However their continued success is dependent upon continued commitment from local authority managers and their recognition of the direct benefits to each authority of continued membership.
- Coastal Groups therefore need to focus on communicating their role and ensuring governance and resource is in place to effect that role.
- A paper on Coastal Groups will be taken to Defra in the summer to highlight these issues and discuss solutions. Coastal Groups and RFCC Coastal Leads will have an opportunity to see this paper in draft before it is discussed.

Bryan Curtis / Nick Hardiman April 2016

This page is intentionally left blank

Hello and welcome to the Spring / Summer 2016 Edition of the LGA Coastal SIG Newsletter, with the latest news and information on the progress of the SIG. Please feel free to circulate this newsletter to others in your local authority or community who may be interested.

Andy Smith
Chairman, LGA Coastal SIG

2016 Knowledge Sharing Event in North Norfolk: 15th – 17th June

The SIG's annual three day learning and knowledge sharing event is being hosted by North Norfolk District Council. North Norfolk are a leading local authorities in coastal adaptation having led on one of the key Coastal Pathfinder schemes. They are also championing National Coastal Erosion Risk Mapping for coastal authorities. The programme includes examining examples of both community adaptation and innovative management of critical national infrastructure on an eroding coast line. The programme is available on the SIG website, click [HERE](#).

Please see the resume of learning from the 2015 Coastal SIG study tour in Blackpool on the SIG website click [HERE](#).

AGM and SIG lead authority election news

Following the two day study tour the AGM will be held at Mo Museum, Sheringham on Friday 17th June. Items on the agenda include innovative funding for local authorities and a follow up on partnership working from the 11th March SIG meeting.

The Chair and Vice Chair positions are scheduled for election in September. Nominations for candidates will open at the AGM in June. The elected Members under take the posts for three years from the December meeting.

Emma Howard Boyd – Acting Chair of the Environment Agency to speak at the September SIG meeting

We are delighted to announce that Emma has kindly agreed to speak at the September SIG meeting on 16th September.



Partnership Working

We hope that you found the information about collaborative working shared at the last SIG meeting useful. A summary of learning is under development and will be circulated soon.

Coastal Partnership East – a new partnership of Great Yarmouth Borough Council, North Norfolk, Suffolk Coastal and Waveney District Councils has just been formed and all four authorities have signed a Section 113 agreements to enable the sharing of resources. In addition Suffolk Coastal and Waveney District Councils are the latest local authorities to sign Public Sector Cooperation Agreements (PSCAs) with the local Internal Drainage Board and shortly the EA.

£90m Boost for Great British Coast

DCLG have announced a £90m fund for creative coastal entrepreneurs (renamed Coastal Communities Fund) who can bid for a share of £90 million government funding available UK-wide over the next 4 years to support their plans to reel in jobs and revitalise our much-loved seaside areas. For more information click [HERE](#).

Licensing discussion with the MMO

The Chairman and lead officer met with Shaun Nicholson Head of Licencing at MMO's licensing team to raise issues expressed by Coastal SIG members and to highlight some of the barriers that exist in the way of efficient working. Your examples have been communicated, and further work will continue to push this issue forwards.

Adaptation

SIG lead officer, Bill Parker, supported by East Riding met with Defra to discuss progress on coastal adaptation and scope the guidance needed for communities adapting to climate and sea level change. The meeting wasn't as productive as hoped and requires further work by the SIG to clarify for Defra and others where progress needs to be made to help local authorities with adaptation. A further update will be given at the AGM on 17th June.

National Trust Shifting Shores 'The next ten/100 years' – Belfast, Northern Ireland

Rob Goodliffe, North Norfolk District Council, attended this seminar in January on behalf of the SIG to give an overview of the England and Wales approach to Shoreline Management Planning.

This event followed the end of the National Trust's 50 years of Neptune Project and the launch of the updated National Trust Shifting Shores report. The aim of this seminar was to build upon the growing discussion in Northern Ireland (NI) for a strategic approach to Shoreline Management.

The governmental structures and legal framework for FCERM and terrestrial planning are very different in NI, for example land use planning has only recently been devolved to a local level and the Coast Protection Act does not apply. There are virtually no existing powers to manage many aspects of the coast. Flood management is actively managed under the EU floods directive alongside the use of the NI 1967 'Bateman Formula' (which does not include coastal erosion risk management). Northern Ireland are looking to build on learning from other nations and develop, from scratch, a world leading approach.



View from the Titanic Centre, Belfast, Northern Ireland

Oil Pollution, Contingency Planning and Response

Officers at Devon County Council attended an oil incident response course by the Marine and Coastguard Agency. A brief summary of this four day course has been circulated and is available on the SIG website. This summary includes links to online training materials, and is available at the bottom of the page by clicking [HERE](#).

Blue New Deal (BND)

Some of the SIG officers have been involved in understanding the role of this group and what benefits it may hold for local authorities. While their action plan is still under development, there is potential for this BND to be a beneficial pressure group offering an alternative method of communication from that of local authorities.

Maintenance Spending

Scarborough Borough Council has undertaken research examining the divergence of spending between local authorities in their area on maintenance of coastal assets. They found significant variation in spend and are keen to see how this compares with the variation nationally. We hope to circulate this questionnaire to you soon – watch this space!

The Chancellor announced in March 2016 an extra £700m for Flood funding. This includes £350m allocated including £40m /yr for four years to the EA to improve their maintenance and bring assets up to standard. Our understanding is the remaining £350m is not yet allocated and there must be scope for local authorities to access some of this for repair and maintenance. Please talk to your local EA office / RFCC and pass on any experiences positive or otherwise you may have.

Flood Defence Consents

New provisions for changes to Flood Defence Consents came in to effect on 6th April 2016. Generally there are higher fees for activities, and there are exemptions and exceptions. Please take a look at the guidance by clicking [HERE](#).

Consultations

Recent consultation responses are available on the SIG website. Thank you for contributing comments – the wider the response the greater the depth of knowledge and more weight the SIG holds!

To see these responses please click [HERE](#).

- JNCC Consultation on Outer Thames Estuary Harbour Porpoise potential Special Area of Conservation (pSAC) (May 2016)
- EA Consultation response to charging for permits for flood risk activities in England from year 2016 to 2017 (Feb 2016)

Upcoming consultations

Natural England extended a consultation on the Outer Thames Estuary Special Protection Area (pSPA). Now closing 14th July.

Updates

- The annual report to the LGA leadership board has been completed. To see a copy of this please click [HERE](#).
- The new Bathing Water season has begun. 2016 is the first year that the new standards are in place. Information from the national group has been circulated to SIG members but if you would like help or more information, particularly for assistance with the media then please get in touch with Adam Ogden, Communications Officer at Blackpool Council on 01253 477273.
- The SIG have welcomed Natural England to a previous meeting to learn about the roll out of the national coastal path due for completion in 2020. The [Suffolk Coast Forum](#) have written to Rory Stewart MP, and contacted Natural England who have responded to queries and concerns set out by the forum. If you are interested to see these communications please let Lucy know.

And other updates

- *The subscription for authorities to the Coastal SIG will remain fixed again for 2016/17, at £330 for the year. This is less than £1 a day and we hope that you see this as excellent value for money too. Request for payment will be sent to your authority soon.*
- *Refurbishment of the LGA has been pushed back from August 2016. The new dates for this work to take place at the LGA House January 2017 – September 2017. Coastal SIG meetings will take place at other venues and these will be communicated to you.*

Future Meeting Dates for your Diary

SIG Meetings

- AGM 15 – 17 June (North Norfolk)
- Friday 16 September
- Friday 2 December

SIGSOG (Officer) Meetings

- Thursday 4 August
- Thursday 10 November

2016/17 SIG meetings: *Meetings are held at The LGA House, Smith Square, London, SW1P 3HZ.*

Coastal SIG Secretary: Lucy Williams


(e) Lucy.williams@eastsuffolk.gov.uk (t) 01394 444552

Suffolk Coastal & Waveney District Councils, Melton Hill, Woodbridge, IP12 1AU






Code	Description	Budget 2015/16	Actuals	Budget Remaining	Forecast expenditure	Comments
	Contribution to SCG/from SCOPAC	0	0	0		
HBSCP 97006	INCOME B/F	-42680	-42961	281		
HBSCP 97016	CONFERENCE INCOME	-1700	-400	-1300		
HBSCP 97017	Membership fees	-53126	-53198	72		
	Total Income	-97506	-96560	-946		
	Shoreline Management Plans					
HBSCP 97018	Shoreline Management Plans	2000	0	2000	0	
	Coastal Research & Monitoring					
HBSCP 97007	Research Chair	8000	7122	878	8000	
HBSCP 97010	Major Projects	17500	0	17500	12500	£5k carried over to 2016/17 for maintenance of timber groynes project
HBSCP 97011	Minor Projects	4000	0	4000	4000	
HBSCP 97014	Grants & Bursaries	500	0	500	500	
HBSCP 97015	Improved Utilisation of Data	1000	850	150	1000	Cakeham report
	Sharing Good Practice					
HBSCP 97009	Workshops	2000	1423	577	500	£500 for 5 Case Model (OBC/FBC) workshop on 11th March 2016
HBSCP 97013	Site visits	2000	0	2000	0	
	Supporting Delivery					
HBSCP/97025		4000	224	3776	1000	
	Influencing Coastal Policies					
HBSCP/97026		2000	713	1288	0	
	Communications					
HBSCP 97004	WEBSITE MANAGEMENT	3000	1344	1656	2500	
HBSCP 97012	Publications	500	0	500	0	
HBSCP 97008	ARTWORK & GRAPHICS	500	128	372	222	
	Leadership/Management					
HBSCP/97024	HBC Coastal recharges	8000	1781	6219	2000	
	Administration					
HBSCP 97000	Secretariat	9700	9700	0	9700	
HBSCP 97001	Accountancy	2100	2100	0	2100	
HBSCP 97003	Insurance	1500	1279	221	1500	
	Total Expenditure	68300	26664	41636		
	Net Income	-29206	-69896	40690		
	n.b Supporting Delivery includes:					Capital Investment Programme maximising investment Maintenance sharing experiences Developing efficiency register Promoting partnership funding opportunities Procurement - Extending Framework Contract

	A	B	C	D	E	F
						
1						
2	Code	Description	Budget 2015/16	Actuals	Budget Remaining	Forecast expenditure
3						
4	HBSCG/97005	Contribution from SCG/from SCOPAC	12,500.00	12,500.00	0.00	
5	HBSCP/97006	INCOME B/F	-33,458.00	-33,739.21	281.21	
6	HBSCP/97016	CONFERENCE INCOME	-1,700.00	-400.00	-1,300.00	
7	HBSCP/97017	Membership fees	-53,126.00	-53,198.46	72.46	
8						
9		Total Income	-75,784.00	-87,337.67	-946.33	
10						
11		Shoreline Management Plans				
12	HBSCP/97018	Shoreline Management Plans	0.00	0.00	0.00	
13						
14		Coastal Research & Monitoring				
15	HBSCP/97007	Research Chair	8,000.00	7,121.86	878.14	8000
16	HBSCP/97010	Major Projects	17,500.00	0.00	17,500.00	12500
17	HBSCP/97011	Minor Projects	4,000.00	0.00	4,000.00	4000
18	HBSCP/97014	Grants & Bursaries	500.00	0.00	500.00	500
19	HBSCP/97015	Improved Utilisation of Data		0.00	0.00	0.00
20						
21		Sharing Good Practice				
22	HBSCP/97013	Workshops	2,000.00	1,137.19	862.81	500
23	HBSCP/97009	Site visits	2,000.00	0.00	2,000.00	0
24						
25		Supporting Delivery				
26	HBSCP/97025			224.00	-224.00	0.00
27						
28		Influencing Coastal Policies				
29	HBSCP/97026		1,000.00	712.50	287.50	0.00
30						
31		Communications				
32	HBSCP/97004	WEBSITE MANAGEMENT	1,500.00	686.94	813.06	1250
33	HBSCP/97012	Publications	250.00		250.00	0
34	HBSCP/97008	ARTWORK & GRAPHICS	250.00	128.10	121.90	22
35						
36		Leadership/Management				
37	HBSCP/97024	HBC Coastal recharges	1,000.00	155.27	844.73	0.00
38						
39		Adminstration				
40	HBSCP/97000	Secretariat	4,850.00	4,850.00	0.00	4850.00
41	HBSCP/97001	Accountancy	1,050.00	1,050.00	0.00	1050.00
42	HBSCP/97003	Insurance	750.00	639.34	110.66	750.00
43						
44		Total Expenditure	44,650.00	29,205.20	27,944.80	
45						
46		Net Income	-31,134.00	-58,132.47	26,998.47	
47						
48						
49						
50						
51						
52						
53						

SCOPAC

	A	B	C	D	E	F
54						
55						
56						
57						
58						
59						
60						
61						
62						
63						
64						
65						
66						

	A	B	C	D	E	F
1						
2	Code	Description	Budget 2015/16	Actuals	Budget Remaining	Forecast expenditure
3						
4						
5	HBSCG/97005	Contribution to SCG/from SCOPAC	-12,500	-12,500	0	
6	HBSCG/97006	INCOME B/F	-9,222	-9,222	-0	
7	HBSCG/97016	CONFERENCE INCOME	0	0		
8	HBSCG/97017	Membership fees	0	0		
9						
10		Total Income	-21,722	-21,722	-0	
11						
12		Shoreline Management Plans				
13	HBSCG/97018	Shoreline Management Plans	2,000	0	2,000	0
14						
15		Coastal Research & Monitoring				
16	HBSCG/97007	Research Chair	0	0	0	0
17	HBSCG/97010	Major Projects	0	0	0	0
18	HBSCG/97011	Minor Projects	0	0	0	0
19	HBSCG/97014	Grants & Bursaries	0	0	0	0
20	HBSCG/97015	Improved Utilisation of Data	1,000	850	150	1000
21						
22		Sharing Good Practice				
23	HBSCG/97013	Workshops	0	286	-286	0
24	HBSCG/97009	site visits	0	0	0	0
25						
26		Supporting Delivery				
27	HBSCP/97025		4,000		4,000	1000
28						
29		Influencing Coastal Policies				
30	HBSCP/97026		1,000	0	1,000	0
31						
32		Communications				
33	HBSCG/97004	WEBSITE MANAGEMENT	1,500	657	843	1250
34	HBSCG/97012	Publications	250	0	250	0
35	HBSCG/97008	ARTWORK & GRAPHICS	250	0	250	150
36						
37		Leadership/Management				
38	HBSCP/97002	Leadership/Management	7,000	1,626	5,374	2000
39						
40		Adminstration				
41	HBSCG/97000	Secretariat	4,850	4,850	0	4,850
42	HBSCG/97001	Accountancy	1,050	1,050	0	1,050
43	HBSCG/97003	Insurance	750	639.33	111	750
44						
45		Total Expenditure	23,650	9,958	13,692	
46						
47		Net Income	1,928	-11,763	13,691	
48						
49		n.b Supporting Delivery includes:	Capital Investment Programme maximising investment			
50			Maintenance sharing experiences			
51			Developing efficiency register			
52			Promoting partnership funding opportunities			
53			Procurement - Extending Framework Contract			
54						
55						
56						

Journal No	Journal Date	Ledger Code	Amount	Tran Code	Section	Pd.	Reference (Line)	User Analysis (Line)	User Data (Line)	Ref Number 2 (Line)	Source A/C	Source A/C Name	Narrative (Line)	CPID Code	VAT Indicator	NRV Percent	NRV Amnt
JN000670	11/12/2015	HBSCP/97000	4,850.00	HGLJNL	Finance & Property	9							Secretary costs for SCOPAC 2015/16			0	0
		HBSCP/97000 Total	4,850.00														0
JN000670	11/12/2015	HBSCP/97001	1,050.00	HGLJNL	Finance & Property	9							Treasurer costs for SCOPAC 2015/16			0	0
		HBSCP/97001 Total	1,050.00														0
JN000684	14/12/2015	HBSCP/97003	639.34	HGLICON	Finance Only	9	YDH	PHPP05000296	MP				YGN 34-HBSCP/97003 Tran Date : 14-DEC-15 ZURICH SCOPAC INS			0	0
		HBSCP/97003 Total	639.34														0
CED00108	31/03/2015	HBSCP/97004	-750	HGLMIG	Finance Only	1	12545						SCOPAC & SCG Website management accruals 2014/15			0	0
CED00111	22/05/2015	HBSCP/97004	750	HGLMIG	Finance Only	1	12564						SCOPAC & SCG Website management accruals 2014/15			0	0
CED00112	22/05/2015	HBSCP/97004	-900	HGLMIG	Finance Only	1	12565						SCOPAC Website Management accrual 2014/15			0	0
CR000712	23/11/2015	HBSCP/97004	167.82	HCRSCN	Customer & Support Services	8	CIN01350		15/7656	HP00846	HC01145	Vivid Business Ltd	Invoice 15/7656 dated 15 october 2015 refers. SCOPAC 2015/16 Website Maintenance SCG 2015/16 Website Maintenance.			0	0
JN000872	07/01/2016	HBSCP/97004	900	HGLJNL	Finance & Property	10							New Forest Council invoice for SCOPAC website management 2014/15 - 50% recharge			0	0

GYE17292	31/03/2016	HBSCP/97004	333.5	HGLGYE	Finance & Property	12								Recharge to SCOPAC/SCG for year end work by Coastal Staff 2015/16			0	0
PR000008	31/03/2016	HBSCP/97004	185.62	HCRACC	Customer & Support Services	12	HP02942	Service Item		HP02942	HC01145	Vivid Business Ltd	Website management and updates Oct 2015 - March 2016. Order for Payment of Invoice of 16/7684	HBSCG 97004				
		HBSCP/97004 Total	686.94															0
JN000670	11/12/2015	HBSCP/97005	12,500.00	HGLJNL	Finance & Property	9							Contribution to Southern Coastal Groups				0	0
		HBSCP/97005 Total	12,500.00															0
YEN17196	04/01/2015	HBSCP/97006	-35,375.61	HGLYEN	Finance Only	0	OB						2015/16 Opening Balances				0	0
JN001615	08/03/2016	HBSCP/97006	900	HGLJNL	Finance & Property	12							SCOPAC Website Management accrual 2014/15				0	0
JN001615	08/03/2016	HBSCP/97006	937.14	HGLJNL	Finance & Property	12							SCOPAC Catering accrual 2014/15				0	0
GYE17293	31/03/2016	HBSCP/97006	-280.74	HGLGYE	Finance & Property	12							SCOPAC Interest 2015/16				0	0
JN001855	31/03/2016	HBSCP/97006	80	HGLJNL	Finance & Property	12							Bad debt provision rolled forward into income B/F				0	0
		HBSCP/97006 Total	-33739.21															0
GYE17292	31/03/2016	HBSCP/97007	7,121.86	HGLGYE	Finance & Property	12							Recharge to SCOPAC/SCG for year end work by Coastal Staff 2015/16				0	0
		HBSCP/97007 Total	7,121.86															0
CED00905	23/04/2015	HBSCP/97008	18	HGLMIG	Facilities	1	152879						C024662-PROP00076-PHOTOCOPIE RS,ALTODIGITAL				0	0

CED08955	14/08/2015	HBSCP/97008	3.6	HGLMIG	Finance Only	4	12972							VAT re Altodigital Invoice			0	0
GYE17284	31/03/2016	HBSCP/97008	37.5	HGLGYE	Finance Only	12								1516 Catering Charges			0	0
JS002258	31/03/2016	HBSCP/97008	69	HGLSUS	Finance & Property	12								SCOPAC Agenda's – HBSCP 97008			0	0
		HBSCP/97008 Total	128.1															0
CED00112	22/05/2015	HBSCP/97013	-937.14	HGLMIG	Finance Only	1	12565							SCOPAC Catering accrual 2014/15			0	0
JN000872	07/01/2016	HBSCP/97013	937.14	HGLJNL	Finance & Property	10								New Forest Council invoice for SCOPAC workshops 2014/15			0	0
CR002301	10/03/2016	HBSCP/97013	685.93	HCRSCN	Customer & Support Services	12	CIN04318		53061010	HP00908	HC01435	Adur & Worthing District Councils		For Adur and Worthing District Councils to provide a meeting facility and refreshments for the Annual Partners Meeting of the South East Coastal Monitoring Programme on 4 November 2015. In case of any query relating to this order, please contact Brian			0	0
JN001860	31/03/2016	HBSCP/97013	137.19	HGLJNL	Finance & Property	12								INPUT TAX - SCOPAC VAT cannot be claimed for Adur and Worthing council provided a meeting facility and refreshments for annual partners			0	0

CED11403	08/06/2015	HBSCP/97017	-3,488.13	HGLMIG	Coastal Partnership	5	12934						Havant Borough Council SCOPAC member 2015/16			0	0
DR000439	17/11/2015	HBSCP/97017	-72.75	HDBINV	D - SCOPAC	8	H0000364				HD00048	Balfour Beatty	Mailing List Membership - Subscription for Southern Coastal Group/SCOPA C 2015/16			0	0
DR000441	17/11/2015	HBSCP/97017	-436.46	HDBINV	D - SCOPAC	8	H0000367				HD00058	Beaulieu Estate	Associated Membership - Subscription for Southern Coastal Group/SCOPA C 2015/16			0	0
DR000443	17/11/2015	HBSCP/97017	-3,488.13	HDBINV	D - SCOPAC	8	H0000371				HD00084	Bournemouth Borough Council	Full Membership - Subscription for Southern Coastal Group/SCOPA C 2015/16			0	0
DR000445	17/11/2015	HBSCP/97017	-72.75	HDBINV	D - SCOPAC	8	H0000378				HD00186	Dr R Mcinnes	Mailing List Membership - Subscription for Southern Coastal Group/SCOPA C 2015/16			0	0
DR000445	17/11/2015	HBSCP/97017	-3,488.13	HDBINV	D - SCOPAC	8	H0000376		EN00368		HD00126	Christchurch Borough Council	Full Membership - Subscription for Southern Coastal Group/SCOPA C 2015/16			0	0
DR000445	17/11/2015	HBSCP/97017	-436.46	HDBINV	D - SCOPAC	8	H0000375				HD00120	Chichester Harbour Conservancy	Associated Membership - Subscription for Southern Coastal Group/SCOPA C 2015/16			0	0
DR000445	17/11/2015	HBSCP/97017	-3,488.13	HDBINV	D - SCOPAC	8	H0000372				HD00118	Chichester District Council	Full Membership - Subscription for Southern Coastal Group/SCOPA C 2015/16			0	0

DR000447	17/11/2015	HBSCP/97017	-3,488.13	HDBINV	D - SCOPAC	8	H0000387		G016860		HD00241	Gosport Borough Council	Full Membership - Subscription for Southern Coastal Group/SCOPA C 2015/16			0	0
DR000447	17/11/2015	HBSCP/97017	-3,488.13	HDBINV	D - SCOPAC	8	H0000386				HD00216	Fareham Borough Council	Full Membership - Subscription for Southern Coastal Group/SCOPA C 2015/16			0	0
DR000447	17/11/2015	HBSCP/97017	-436.46	HDBINV	D - SCOPAC	8	H0000384				HD00196	Eastleigh Borough Council	Associated Membership - Subscription for Southern Coastal Group/SCOPA C 2015/16			0	0
DR000447	17/11/2015	HBSCP/97017	-3,488.13	HDBINV	D - SCOPAC	8	H0000383				HD00209	Environment Agency	Full Membership - Subscription for Southern Coastal Group/SCOPA C 2015/16 Order numbers 30446520 - £1744.13 30446411 - £1744.00			0	0
DR000447	17/11/2015	HBSCP/97017	-436.46	HDBINV	D - SCOPAC	8	H0000381		4500298467		HD00174	Dorset County Council	Associated Membership - Subscription for Southern Coastal Group/SCOPA C 2015/16			0	0
DR000447	17/11/2015	HBSCP/97017	-436.46	HDBINV	D - SCOPAC	8	H0000379		3158196		HD02491	The Crown Estate	Associated Membership - Subscription for Southern Coastal Group/SCOPA C 2015/16			0	0
DR000448	17/11/2015	HBSCP/97017	-3,488.13	HDBINV	D - SCOPAC	8	H0000392				HD02303	New Forest District Council	Full Membership - Subscription for Southern Coastal Group/SCOPA C 2015/16			0	0

DR000448	17/11/2015	HBSCP/97017	-3,488.13	HDBINV	D - SCOPAC	8	H0000390				HD00354	Isle Of Wight Council	Full Membership - Subscription for Southern Coastal Group/SCOPA C 2015/16			0	0
DR000448	17/11/2015	HBSCP/97017	-72.75	HDBINV	D - SCOPAC	8	H0000389				HD00258	Hampshire & Wight Trust For Ma	Mailing List Membership - Subscription for Southern Coastal Group/SCOPA C 2015/16			0	0
DR000448	17/11/2015	HBSCP/97017	-3,488.13	HDBINV	D - SCOPAC	8	H0000388		9002956584		HD00322	HCC Processing Centre	Full Membership - Subscription for Southern Coastal Group/SCOPA C 2015/16			0	0
DR000450	17/11/2015	HBSCP/97017	-436.46	HDBINV	D - SCOPAC	8	H0000396				HD02362	Purbeck District Council	Associated Membership - Subscription for Southern Coastal Group/SCOPA C 2015/16			0	0
DR000450	17/11/2015	HBSCP/97017	-72.75	HDBINV	D - SCOPAC	8	H0000395				HD02521	University Of Portsmouth	Mailing List Membership - Subscription for Southern Coastal Group/SCOPA C 2015/16			0	0
DR000450	17/11/2015	HBSCP/97017	-3,488.13	HDBINV	D - SCOPAC	8	H0000394				HD02349	Portsmouth City Council	Full Membership - Subscription for Southern Coastal Group/SCOPA C 2015/16			0	0
DR000451	17/11/2015	HBSCP/97017	-3,488.13	HDBINV	D - SCOPAC	8	H0000399				HD02546	West Dorset District Council	Full Membership - Subscription for Southern Coastal Group/SCOPA C 2015/16			0	0
DR000451	17/11/2015	HBSCP/97017	-436.46	HDBINV	D - SCOPAC	8	H0000398				HD02435	Southampton City Council	Associated Membership - Subscription for Southern Coastal Group/SCOPA C 2015/16			0	0

DR000451	17/11/2015	HBSCP/97017	-72.75	HDBINV	D - SCOPAC	8	H0000397				HD02427	Solent Forum	Mailing List Membership - Subscription for Southern Coastal Group/SCOPA C 2015/16			0	0
DR000452	17/11/2015	HBSCP/97017	-436.46	HDBINV	D - SCOPAC	8	H0000403				HD02570	Yarmouth Harbour Commissioners	Associated Membership - Subscription for Southern Coastal Group/SCOPA C 2015/16			0	0
DR000452	17/11/2015	HBSCP/97017	-3,488.13	HDBINV	D - SCOPAC	8	H0000402				HD02566	Worthing Borough Council	Full Membership - Subscription for Southern Coastal Group/SCOPA C 2015/16			0	0
DR000452	17/11/2015	HBSCP/97017	-436.46	HDBINV	D - SCOPAC	8	H0000401				HD02552	Weymouth & Portland BC	Associated Membership - Subscription for Southern Coastal Group/SCOPA C 2015/16			0	0
DR000452	17/11/2015	HBSCP/97017	-72.75	HDBINV	D - SCOPAC	8	H0000400				HD02549	Westminster Dredging Co Ltd	Mailing List Membership - Subscription for Southern Coastal Group/SCOPA C 2015/16			0	0
DR000464	18/11/2015	HBSCP/97017	-3,488.13	HDBINV	D - SCOPAC	8	H0000408				HD00081	Borough Of Poole	Full Membership - Subscription for Southern Coastal Group/SCOPA C 2015/16			0	0
		HBSCP/97017 Total	-53,198.46														0
CED00108	31/03/2015	HBSCP/97021	750	HGLMIG	Finance Only	1	12545						SCOPAC & SCG Website management accruals 2014/15			0	0
CED00111	22/05/2015	HBSCP/97021	-750	HGLMIG	Finance Only	1	12564						SCOPAC & SCG Website management accruals 2014/15			0	0
CED00112	22/05/2015	HBSCP/97021	900	HGLMIG	Finance Only	1	12565						SCOPAC Website Management accrual 2014/15			0	0

Cost centre	Cost centre description	Account	Account description	Custom period range2014/1-2014/12	Amount
HBSCP	SCOPAC	93110	ORDERS NOT RECEIVED		0.00
HBSCP	SCOPAC	93111	RECEIVED NOT INVOICED		0.00
HBSCP	SCOPAC	97000	HAVANT SECRETARY COSTS		4200.00
HBSCP	SCOPAC	97001	HAVANT TREASURER COSTS		1200.00
HBSCP	SCOPAC	97002	CHAIRMAN OF SCG FEES		0.00
HBSCP	SCOPAC	97003	LIABILITY INSURANCE		608.89
HBSCP	SCOPAC	97004	WEBSITE MANAGEMENT		1375.01
HBSCP	SCOPAC	97005	CONTRIBUTION FROM SCOPAC		0.00
HBSCP	SCOPAC	97006	INCOME B/F		-21842.30
HBSCP	SCOPAC	97007	SCOPAC CHAIRMAN EXPS		0.00
HBSCP	SCOPAC	97008	ARTWORK & GRAPHICS		-114.00
HBSCP	SCOPAC	97009	SCOPAC FIELD MEETING		2122.50
HBSCP	SCOPAC	97010	LOCAL PROJECTS		4000.00
HBSCP	SCOPAC	97012	CONT SOUTHERN COASTAL GROUP		12500.00
HBSCP	SCOPAC	97013	TRAINING EVENTS		2237.14
HBSCP	SCOPAC	97015	NEW RESEARCH		15000.00
HBSCP	SCOPAC	97016	CONFERENCE INCOME		-1700.00
HBSCP	SCOPAC	97017	SUBSCRIPTIONS		-53125.71
HBSCP	SCOPAC	97021	SCOPAC/SCG Accruals		
HBSCP	SCOPAC	97022	SCOPAC/SCG Bad debt provision		80.00
HBSCP	SCOPAC	97023	SCOPAC/SCG Bad debt (I & E)		
					-33458.47
			Accrual figures		-1837.14
			Accrual figures		-80.00

Cost centre	Cost centre description	Account	Account description	Custom period range2014/1-2014/12	Amount
HBSCG	SOUTHERN COASTAL GROUP	97000	HAVANT SECRETARY COSTS		5500.00
HBSCG	SOUTHERN COASTAL GROUP	97001	HAVANT TREASURER COSTS		900.00
HBSCG	SOUTHERN COASTAL GROUP	97002	CHAIRMAN OF SCG FEES		0.00
HBSCG	SOUTHERN COASTAL GROUP	97003	LIABILITY INSURANCE		608.89
HBSCG	SOUTHERN COASTAL GROUP	97004	WEBSITE MANAGEMENT		1412.50
HBSCG	SOUTHERN COASTAL GROUP	97005	CONTRIBUTION FROM SCOPAC		-12500.00
HBSCG	SOUTHERN COASTAL GROUP	97006	INCOME B/F		-5143.24
HBSCG	SOUTHERN COASTAL GROUP	97021	SCOPAC/SCG Accruals		
					-9221.85
			Accrual figures		-900.00

PAPER D

Purpose : For Discussion

Committee: **SOUTHERN COASTAL GROUP**

Date: **JUNE 2016**

Title : **RESEARCH PROGRAMME**

REPORT OF THE CHAIRPERSON OF THE SCOPAC RESEARCH SUB-GROUP

1 CURRENT RESEARCH PROGRAMMES

1.1 SCOPAC MINOR PROJECTS FUND (2013/2014 AND 2014/2015)

Following the Southern Coastal Group meeting in July 2013 it was agreed the following Minor Project would be funded for 2013/2014 and 2014/2015.

University of Southampton – coastal sediment budget project

Minor contribution of £4,000

The University of Southampton was awarded £4,000 as a contribution towards a project focusing on sediment sources and transport pathways across the Dolphin Bank and Dolphin Sand, within the context of the much larger sediment cell of Poole and Christchurch Bays.

Key questions are:

1. Are Dolphin Sand and Dolphin Bank fed by the same sediment source?
2. What are the sediment transport pathways over and around the banks?
3. Are these banks largely relict, or are they sinks or sources of sediment to the coast?

During October 2014, 60 sediment samples were collected from the Dolphin Bank and Dolphin Sand in Poole Bay. These have been sieved in the lab and grain size trend analysis run on the samples to establish net sediment transport. This, along with analysis of Regional Coastal Monitoring data, will add new information to establishing sediment transport directions and sources around Poole and Christchurch Bays. This will inform the update of the SCOPAC Sediment Transport Study.

The report is currently being reviewed by members of the SCOPAC Research sub-group before being uploaded onto the SCOPAC website.

Recommendation: For information

1.2 SCOPAC MINOR PROJECTS FUND (2015/2016 AND 2016/2017)

Following the Southern Coastal Group meeting in December 2014 it was agreed that SCOPAC would benefit from funding the following two Minor Projects for 2015/2016 and 2016/2017.

Dr Uwe Dornbusch (Environment Agency): Establishing shingle transport pathways from the sub-tidal to the beach: Church Norton Spit

Minor contribution of £4,000

Church Norton Spit at Pagham Harbour, West Sussex has accreted by approximately 100,000m³ of material in the past 10 years, making it one of the largest accreting features across the SCOPAC region.

The origin of the material is unknown; therefore this study will investigate whether the material is transported from the sub-tidal across the nearshore bedforms to the shore. The sub-tidal area fronting the Pagham frontage is very shallow and covered with gravel. Some of this is visibly moving onshore as landforms (Inner Owers) but there are some peculiar shingle features at right angles to the beach that are thought to act as transport corridors.

SCOPAC has awarded £4,000 as a contribution towards the project to establish offshore to onshore shingle transport pathways at Church Norton Spit. Investigation of the nearshore bedforms will be achieved using two approaches:

- 1) A desktop GIS approach using South-east Regional Monitoring Programme data to capture changes over the last 10 to 15 years.
- 2) Sediment tracing using the methods developed by the Eastern Solent Coastal Partnership to document shingle movement under different conditions.

The project was instigated by Dr Uwe Dornbusch of the Environment Agency, Arun DC and Chichester DC and is being led by Dr Cherith Moses from the University of Sussex with input from Professor David Sear from the University of Southampton. The Eastern Solent Coastal Partnership is providing the tracer study retrieval equipment.

Lucy White from the University of Sussex has completed her research, for which the results will be discussed at the meeting. A two page summary of Lucy's results will be prepared for the SCOPAC and SCG websites.

Dr Andy Pearce (Eastern Solent Coastal Partnership): Beach response in front of structures in open coast

Minor contribution of £4,000

Lowering of beaches in front of coastal structures is widely accepted as a leading cause of failure. Beach lowering and toe scour is difficult to detect as the receding tide and storm waves tend to bury this evidence and any damage to structure foundations.

The SCOPAC region includes numerous beach structures at risk of scour, with foundations of poorly known depth and condition. Improved understanding of the

scour risk at these structures will help SCOPAC members to better manage the scour risk and to design scour resistant replacements.

The first stage of the project is to conduct a test deployment at the Eastern Solent Coastal Partnership's (ESCP) own risk to confirm the most effective method for installing scour monitoring equipment into a beach. Subject to a successful test, the ESCP will apply the SCOPAC funding to undertake a deployment at a seawall structure in winter 2016/17 to measure changes in storm beach levels and maximum scour depth.

The ESCP have commenced the scoping stage of the project, building on the experience of Amanda Holland, a Ph.D student studying short term beach level changes at Hayling Island. Deployment of the scour chain monitoring equipment will commence in the winter of 2016/17.

Recommendation: For information

1.3 MONITORING OF POOLE NEARSHORE REPLENISHMENT TRIALS

Channel Coastal Observatory: £15,000 from SCOPAC and £116,000 from EA R+D fund (2015 – 2016)

SCOPAC are contributing £15,000 towards the monitoring of a trial which has placed 30,000 m³ of sand on the seabed, allowing natural processes to push it onshore to replenish the beaches in Poole Bay. This technique has not been tested in the United Kingdom to date.

The project commenced in February 2015, and involved the Borough of Poole working in partnership with Poole Harbour Commissioners, the Environment Agency, University of Southampton and the Channel Coastal Observatory. Poole Harbour Commissioners provided the sand from maintenance dredging of Poole Harbour entrance, thereby recycling the sand back into the system, rather than dumping it offshore.

The works were undertaken between the 9th and 14th February 2015, when 30,000m³ of sand was placed on the sea bed approximately 450m offshore at Canford Cliffs Chine in Poole Bay. Six survey sets have been completed since the material was placed on the sea bed. Each set consists of a topographic survey of the beach and a bathymetric survey of the sea bed. The tracer searches have been completed and the Channel Coastal Observatory (CCO) has received the final results.

The Acoustic Doppler Current Profiler (ADCP) is still in position. This measures the speed, direction and turbidity of water currents using sound waves. With the ADCP installed, any turbidity difference between the trial and conventional beach recharge can be assessed. Further analysis of the silt traps is in progress.

A topographic and swath bathymetry survey took place in March 2016 to identify if the material moved during the winter months.

Analysis of the results is on going by the CCO and will be published summer 2016. A leaflet has been produced, outlining preliminary results

<http://scopac.org.uk/29%20July%20Poole%20Bay%20Nearshore%20Trial%20LOW%20RES%20Final%20%20inc%20EA-CCO%20comments.pdf>

Funding provided is as follows:

- * Environment Agency: £130,000 for the placing of sand on the seabed
- * Environment Agency Research & Development Fund: £116,000 for monitoring
- * SCOPAC: a further £15,000 towards monitoring costs

Recommendation: For information

1.4 SCANNING OF HISTORICAL AERIAL PHOTORGAPHY

Environment Agency: £11,000 (2015 - 2017)

Analysis of historical aerial photography is fundamental to understanding coastal evolution and change. The Environment Agency has now scanned almost all Annual Beach Monitoring Survey aerial photography negatives in collaboration with the National Collection of Aerial Photography and Blom. A number of Local Authorities hold historical aerial photography from the 1960's, 1970's, 1980's, 1990's and the millennium. Post 2002, aerial photography is captured across the SCOPAC region as part of the South-east and South-west Regional Coastal Monitoring Programme for 2002, 2008 and 2013.

This project has produced a record of the historical aerial photography held by the councils within the SCOPAC region. Scanning by the National Collection of Aerial Photography (NCAP) has commenced, focussing on images not previously scanned. The images will be made freely available where copyright permits.

Recommendation: For information

1.5 BOURNEMOUTH BOROUGH COUNCIL: DISMANTLING OF TIMBER GROYNES

Bournemouth Borough Council: £10,000 (2015 - 2017)

Bournemouth Borough Council has started deconstructing 8 of the 13 timber groynes which were built in 1985 to 1987.

8 groynes in early 2016:

#25, #26 Greenheart

#27, #28 #29 #30 #31 Ekki

#32 Balau and Jarrah

5 groynes in early 2017:

#33 Jarrah & Balau

#34 Greenheart

#35 Opepe

+ 2 more Greenheart

All other groynes along the frontage are greenheart.

This is a golden opportunity to assess the relative merits of 5 timber types after a 29-year field test. Bournemouth Borough Council plan to carefully dismantle each groyne, numbering each plank to record its original location in terms of distance from seaward end & level. Any planks that are “unworn” will be set aside for re-use in new groynes and will not require further assessment.

Any “worn” planks will be assessed as to the degree of Gribble infestation and the degree of abrasion; and relate both factors to location on the groyne. The SCOPAC funds will be used for the scientific analysis which will be undertaken by Jon Williams of TRADA, starting March 2016.

Recommendation: For information

1.6 MAINTENANCE OF COASTAL STRUCTURES - PHASE 1: TIMBER GROYNES

Update to be discussed at the meeting.

Recommendation: For information

1.7 UPDATE OF THE SCOPAC SEDIMENT TRANSPORT STUDY

Channel Coastal Observatory: £150,000 (2013 - 2016) – funded by the Environment Agency with contributions from SCOPAC

The SCOPAC Sediment Transport Study (2004) is being updated by the Channel Coastal Observatory (<http://www.scopac.org.uk/sediment-transport-update.html>). The last update was undertaken in 2004 by the original authors, Dr Malcolm Bray, Dave Carter and Prof Janet Hooke. Since 2004 a wealth of data has been collected by the South-east and South-west Regional Coastal Monitoring Programmes. This data, along with new literature is being incorporated into the update. The following has been completed to date:

- Where data have been available, sediment budget calculations have been completed for Start Point to Straight Point and Isle of Wight, and reviewed and completed for Hurst Spit to Beachy Head to ensure a consistent approach. A number of other units are in progress.
- For these units, maps have been revised to reflect updates to sediment transport arrow directions, volumes, types, legend, title and labels, etc.
- A 'final' draft map for these areas have been produced, in readiness for discussion with the steering group and subsequently review by the relevant Coastal Engineers.
- Topographic, bathymetric, lidar and aerial photography data have been compiled for the remaining areas (between Exmouth and Portland) and Digital Terrain Models produced in preparation for analysis.
- Further to the review of the literature already undertaken, additional amendments and comments have been drafted for the unit descriptions with respect to data sources, quantification of sediment transport, etc.

- A summary narrative has been compiled for each unit documenting procedure, queries, technical issues and other supplementary notes, which will aid future discussions.
- The existing maps have links to a number of photographs. These photographs (and links) have been reviewed, descriptions and copyrights amended, and additional supporting photographs and attributions have been identified for consideration for inclusion in revised versions of web-based maps; these include both plan shape and oblique photographs.
- All available swath bathymetry data have been collated along with substrate/seabed interpretation mapping. Descriptions of the substrate type, bedforms and information relating to mobility of sediments, and areas of exposed or partially exposed bedrocks have been drafted for the units covering Beachy Head to Newhaven, Shoreham to East Head and the Isle of Wight.

Once all units have been progressed to a consistent level of assessment, the revised maps and descriptions will be sent to each Coastal Engineer for comment.

Recommendation: For information

1.8 REDUCING REGIONAL FLOOD AND EROSION RISK FROM WAVE ACTION ON THE CHANNEL COAST PROJECT

Channel Coastal Observatory and HR Wallingford: £250,000 (2014 - 2017) – funded by the Environment Agency with contributions from SCOPAC

A region-wide assessment to examine the impacts of combined swell and storm (bimodal) waves on the shingle beaches of the SCOPAC region is being undertaken by the Channel Coastal Observatory. The three year study is investigating improvements to definition of standards of service for coastal schemes, improved flood forecasting, and improved definition of design wave conditions.

The test facility at HR Wallingford was used to undertake the modelling. Initial tests on a standard beach profile demonstrated a correlation between an increase in the storm berm elevation and landward migration of the storm berm, with increasing swell. Site specific modelling was undertaken for Hurst Spit, Chesil Beach and Hayling Island, whereby actual storm events were tested on a measured profile. Analysis of the generic results are on-going to establish exactly what spectra were achieved at each wave probe compared to what was being generated at the paddle (due to wave interactions/breaking/shoaling etc.). HR Wallingford are analysing the measured profiles to find generic equations to describe them.

The project is nearing completion with the bulk of the analytical work complete. The final model will be launched at a workshop to be held at the National Oceanography Centre on the 28th June 2016. The pre-workshop meeting was held at HR Wallingford on the 10th June 2016.

Recommendation: For information

Contact: **Dr Samantha Cope** (Chairperson of the Research Sub-Group),
sam.cope@havant.gov.uk, tel 02392 446381

ow.ly/UyVr3

**FCRM Board Meeting
Technical Session
Meeting Date: 23rd December 2015
Item No. Xx**

Appendix 1: Options Summary

Paper By: Nick Hardiman / Mark Johnson

Subject: Updating the Regional Habitat Creation Programme

Recommendation

The Board is asked to:

- 1) note the need to review the strategic approach and delivery of habitat creation,
- 2) support our recommendation to proceed with option 3B for an approach that combines strategic co-ordination with a flexible structure, focused on strategic habitat creation wider than just Natura 2000 compensation schemes.

1.0 Background

- 1.1 In Shoreline Management Plans and other strategic FCRM plans we set out the actions needed to manage the risk from flooding and coastal erosion. Some of these actions cannot be delivered without an adverse impact on habitats. When we agreed these plans with Defra and Natural England we also put in place strategic plans to compensate for the associated habitat loss on Natura 2000 sites. Creating such compensatory habitat is statutory and can take many years.
- 1.2 In the past we managed the implementation of the plans through our regional Habitat Creation Programme (HCP). Co-ordinated by regional leads, this set out how Natura 2000 compensation needs would be addressed, generally without regard to other environmental obligations for FCRM. The programme identified sites so we could meet the legal requirement of creating compensatory habitat before losses occur. This reflected Defra policy on anticipatory land acquisition drove efficiency and enabled greater ecological gain by combining schemes to create larger sites. Examples of its success include the schemes at Medmerry and Wallasea. The HCP approach was much more effective than opportunistically creating smaller sites.
- 1.3 The HCP comprised of:
 - a network of regional habitat creation 'leads' to co-ordinate delivery and partnership working: the FCRM Directorate brought leads together to share opportunities, experiences, legal guidance and resource on project management;
 - a series of habitat creation schemes within investment plans;
 - a pipeline of future projects under development;
 - reporting (to Defra in 2013) on current and potential habitat creation work.
- 1.4 Since 2013 the HCP network has stalled due to funding, resource, and prioritisation issues. As a result there is no longer a single national strategic approach to the delivery of Natura 2000 habitat creation. Some Areas are still working together using the HCP approach, but not all. As this is a statutory requirement it is worth

considering if this now uncoordinated delivery will achieve our requirements in the most effective way.

- 1.5 We have identified two main considerations for the future of this programme: the structure of the programme and its scope. The structure is how we choose to organise staff and co-ordinate it. The scope is about the elements of our environmental work it covers.
- 1.6 In the appendix to this paper we present three approaches to dealing with structure and three alternatives on scope. These can be combined to create a range of options. Our preferred option is the combination 3B. This is for a programme that combines strategic co-ordination with a flexible structure and focuses on habitat creation wider than just Natura 2000 schemes. The rest of this paper explains our recommendation. We are looking for agreement from the joint WLB-FCRM Board to re-energise this strategic approach to habitat creation and thereby provide demonstrable value for money and ensure an auditable decision trail.

2.0 Structure of the Habitat Creation Programme

- 2.1 The HCP was a regional model, partly to fit our previous EA structure but also to reflect the most appropriate scale for habitat compensation opportunities. The regional leads were those with the required resource and expertise rather than from specific teams. Some parts of the country have a significantly greater pressure on habitat creation than others, and the resource commitment varied to reflect this.
- 2.2 AFCRMs and staff with previous involvement in the HCP support retaining this flexible approach to habitat creation leads. This is option 3 in the Appendix. We believe this will give us the best approach to managing limited resource and differing needs whilst providing the strategic overview the programme needs to be successful.

3.0 Scope of the Habitat Creation Programme

- 3.1 HCP leads typically focussed on Natura 2000 compensation, although in some areas they considered other environmental delivery such as ambitions associated with the England Biodiversity Strategy or WFD where appropriate and cost-effective.
- 3.2 Defra's recent steer is that, where possible, our environmental delivery in FCRM should be integrated into our planned capital and maintenance schemes instead of being provided through separate projects. We need to be able to identify how to achieve FCRM outcomes by 'designing-in' features or choosing options that will help us meet multiple requirements in an integrated way. These include statutory environmental duties associated with FCRM activities, Defra Outcomes and wider catchment requirements.
- 3.4 To avoid compromising the important focus that habitat creation requires, AFCRMs and previous HCP leads support retaining a HCP approach which includes but is not limited to Natura 2000-related needs. This is option B in the Appendix. However, a Community of Practice that brings in support from various functions is being drawn together that could provide an opportunity for habitat creation leads to link their priorities to wider environmental delivery.

4.0 Impact on Operations Teams

- 4.1 Habitat creation – and other environmental delivery associated with FCRM – is part of the investment programme and integral to its delivery. Responsibility for FCRM

strategic planning, partnership working and seeking contributions lies with Area Partnership and Strategic Overview teams, AFCRMs and ultimately Area Managers: this includes habitat creation and improvement works. However the technical expertise needed to design and deliver much of the programme may lie elsewhere.

- 4.2 Our proposed approach will need Areas to confirm their habitat creation lead. We expect this to be staff already working on this type of work at a local or multi-Area level. Being involved in a strategically coordinated programme will help them justify their proposals to RFCCs and co-ordinate with other Area and River Basin initiatives. This is important as compensating for large works often requires land searches beyond the Area proposing the work. By taking a flexible approach we believe the need for extra staff or extra training for existing leads will be minimal.

5.0 Legal or reputational issues

- 5.1 We have been asked questions about the existing HCP by both Defra and Natural England. They want to know its status and how we intend to continue achieving the outcomes it was designed to support. Area teams are also seeking clarification to help their decisions and engagement around local scheme delivery.
- 5.2 We believe that the proposals we set out in this paper will help to manage these concerns, and hence manage reputational and legal risk. We have already agreed to report progress on strategic habitat creation to Defra every other year from May 2016. A co-ordinated programme will support this reporting.

6.0 Communications and Engagement

- 6.1 The options described in the appendix, and the recommendation to pursue option 3B, are based upon conversations with Operations. We've also gained support from the RFCC Conservation Members and Coastal Group Chairs.
- 6.2 We have kept Defra and Natural England up-to-date with progress on re-establishing our strategic approach to habitat creation. We have agreed to provide a progress report on strategic habitat creation to Defra and Natural England every other year from May 2016.

7.0 Recommendations

- 7.1 The Board is asked to:
- 1) note the need to review the strategic approach and delivery of habitat creation,
 - 2) support our recommendation to proceed with option 3B for a programme that combines strategic co-ordination with a flexible structure and focused on strategic habitat creation wider than just Natura 2000 schemes.

Author: Nick Hardiman
FCRM Sponsor: Clare Dinnis
Operations Sponsor: Mark Johnson

Date: 10 December 2015

(overleaf) APPENDIX: Options table: Structure and organisation (1-3) / scope (A-C).

OFFICIAL

STRUCTURE			
Option	Description	Benefits	Impacts
1 – No strategic co-ordination of habitat creation	Variable approach, no governance, piecemeal identification and delivery of habitat creation. AFCRM accountability.	No cost implications in terms of staff resource.	High risk of failing to meet legal obligations. Opportunities for habitat creation and integrated delivery are missed, and habitat creation is not cost-effective. Partnership working and sharing of experience is limited.
2 – Strategic co-ordination using Area model	'Area HCP' instead of Regional HCP, with a nominated lead in each Area Programme or PSO team to drive habitat creation and liaise with colleagues, external partners and RFCCs; AFCRM accountability.	Area roles, responsibilities and 'ownership' of habitat creation are made explicit. Habitat creation effort is locally driven, with some flexibility according to need. Links between Area leads and RFCCs on habitat creation progress and issues are formalised.	Opportunities for cost-effective habitat creation between Areas may still be missed. National co-ordination of 16 Area reps more challenging. Consistent staff and training needs for Area specialists means a potential mismatch between resource effort and need.
3 – Strategic co-ordination with Area accountability but flexible structure	Nationally co-ordinated community of practice with habitat creation leads nominated flexibly according to team and spatial representation (e.g. Area, RFCC or other multi-Area scale). Responsibilities for leads and AFCRMs as per 2.	Strategic, flexible and responsive to habitat creation need. Uses existing expertise. Improved 'ownership' of habitat creation in Area teams, and inter-Area co-operation. Links with RFCCs on habitat creation remain at suitable level. Experience shared through community of practice.	Area teams have less incentive to take ownership of integrated environmental delivery through the investment programme. Less consistent approach to HCP risks draw-down of environmental effort and expertise in Areas with less habitat creation need.
SCOPE			
Option	Description	Benefits	Impacts
A – habitat creation leads focus on Natura 2000 compensation	Focus on Natura 2000 compensatory habitat requirements. Join-up with other habitat creation initiatives is purely opportunistic via Community of Practice environment group.	Focus retained on the key statutory driver for habitat creation associated with FCRM; high confidence in meeting our Natura 2000 legal obligations. No extra training to deliver.	Opportunities for integrating habitat creation and other environmental delivery likely to be missed. Environmental delivery (including other statutory responsibilities) may be less cost-effective overall. Ignores Defra steer.
B – habitat creation leads widen scope to include other <i>habitat creation</i> drivers	Focus on habitat creation requirements. Join up with other environmental delivery (WFD habitat <i>improvements</i> , eel passes etc) is purely opportunistic via Community of Practice environment group.	Likelihood of meeting legal obligations remains high, but with efficiencies possible through integration with related habitat creation schemes. Little or no extra training needed to deliver.	Opportunities for integrating environmental delivery more broadly (e.g. through scheme design) may still be missed.
C – habitat creation leads widen scope to include <i>all environmental delivery</i>	Community of Practice environment group with all members considering all environmental delivery drivers in the Environment Agency, including WFD and Eel Regulations obligations.	Environmental delivery opportunities (within and in addition to scheme design) identified together. Efficiencies possible through full integration.	Focus on statutory drivers for habitat creation may be compromised, risking failure to meet legal obligations. Likely need for extra staff training and resource to cope with broad field of expertise required.

OFFICIAL

This page is intentionally left blank



Report to Southern Coastal Group

June 2016

1. SURVEYS

1.1 Topographic Surveys

To date, all spring surveys have been completed.

1.2 Bathymetric Surveys

The swath bathymetry survey from Shoreham to Pagham Spit has been completed by EGS (international) Ltd. The Shoreham to Pagham frontage extended 1km offshore of MLW and abuts with the recently completed MCA survey to the east; the Pagham Spit frontage was extended 3km offshore and abuts with the 2013 East Solent survey.

1.3 Lidar Surveys

Data capture for 2015/16 is complete. Data are undergoing quality control.

2. HYDRODYNAMICS

At the time of writing, all Waverider buoys are operational.

3. WEBSITE

The Programme's earlier aerial photography (pre-2013) is now available for download from website under the Open Government Licence (copyright Environment Agency). The real time hydrodynamic data pages have been revised to auto-scale so as to make them suitable for tablet and smart phones.

5. GENERAL

Habitat mapping have been awarded to map the 2013 aerial photography. A contract has also been awarded for an aerial photography flight this summer.

This page is intentionally left blank