

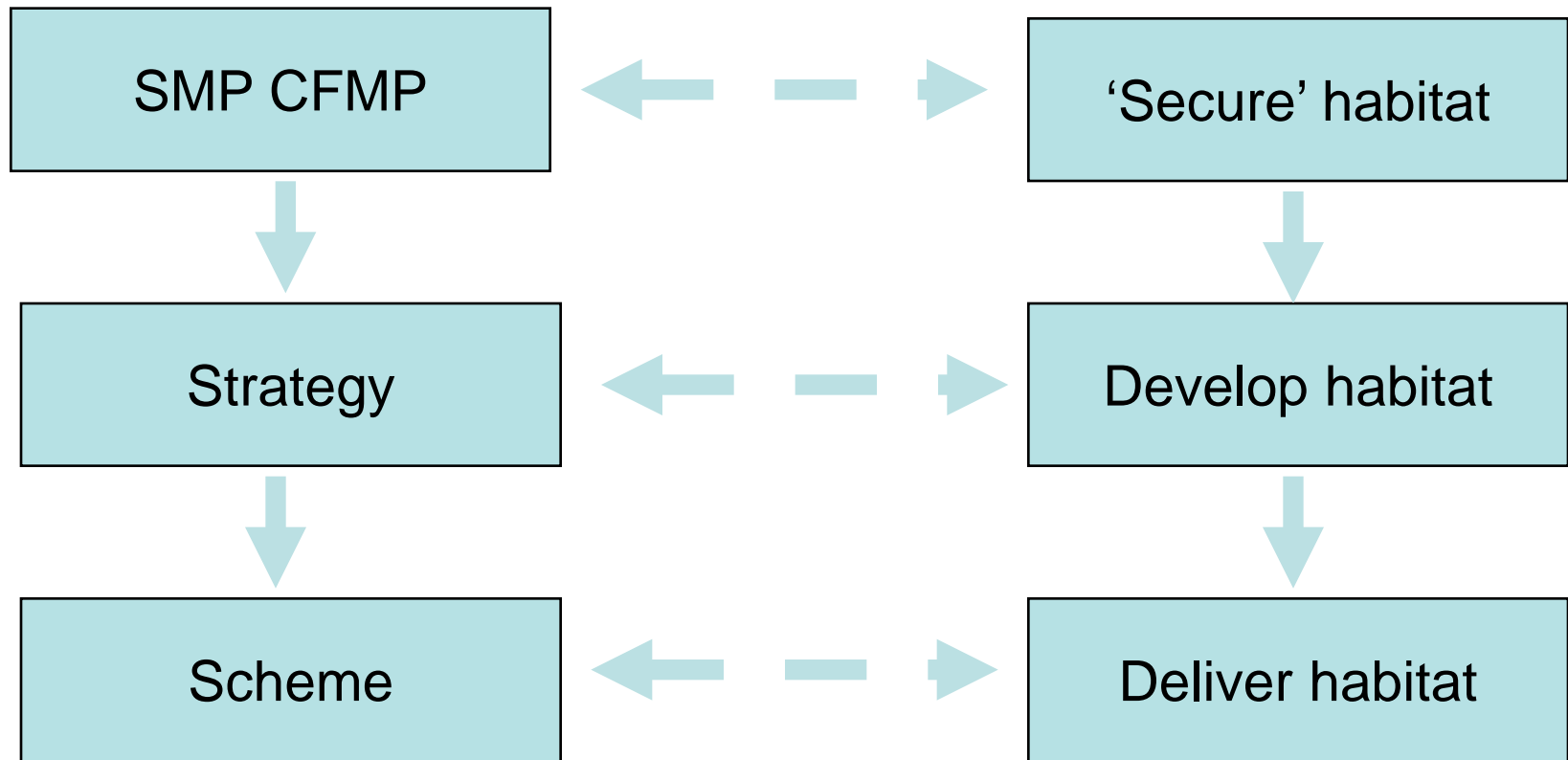
# Regional Habitat Creation Programme

**Uwe Dornbusch**  
**Supra Area**  
**Coastal Engineer**

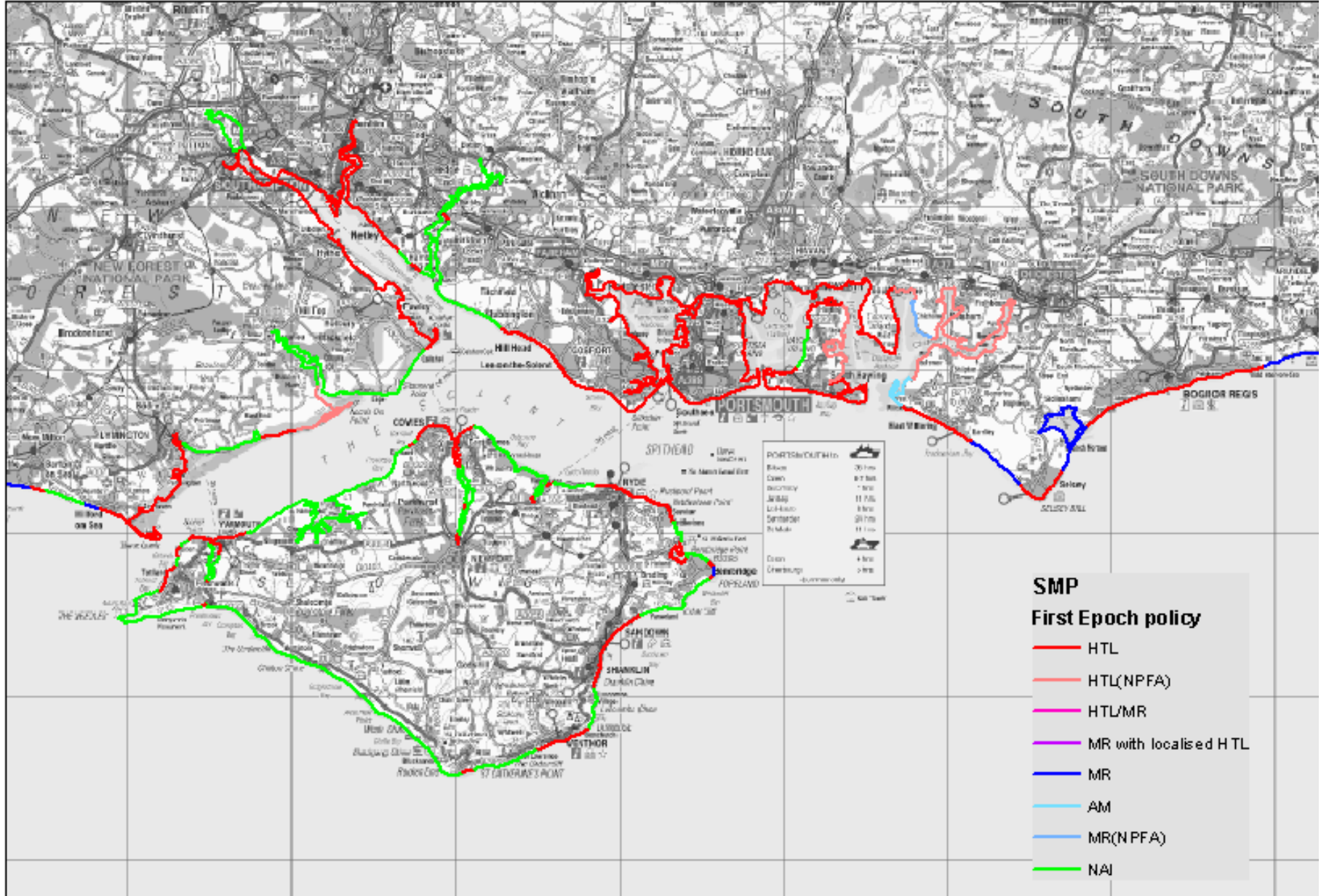
# Habitat Creation Programme

- **Enables** the Flood & Coastal Risk Management Programme of **all** Authorities
- **Legal** (Ensure compliance with Habitat Regulations) and **moral** obligation.
- SMP policies are based on the **promise** to provide compensatory habitat
- The RHCP is the vehicle for a Strategic Proactive Approach supported by Defra (EA & NE)

# Flood Risk Planning & the Habitat Programme





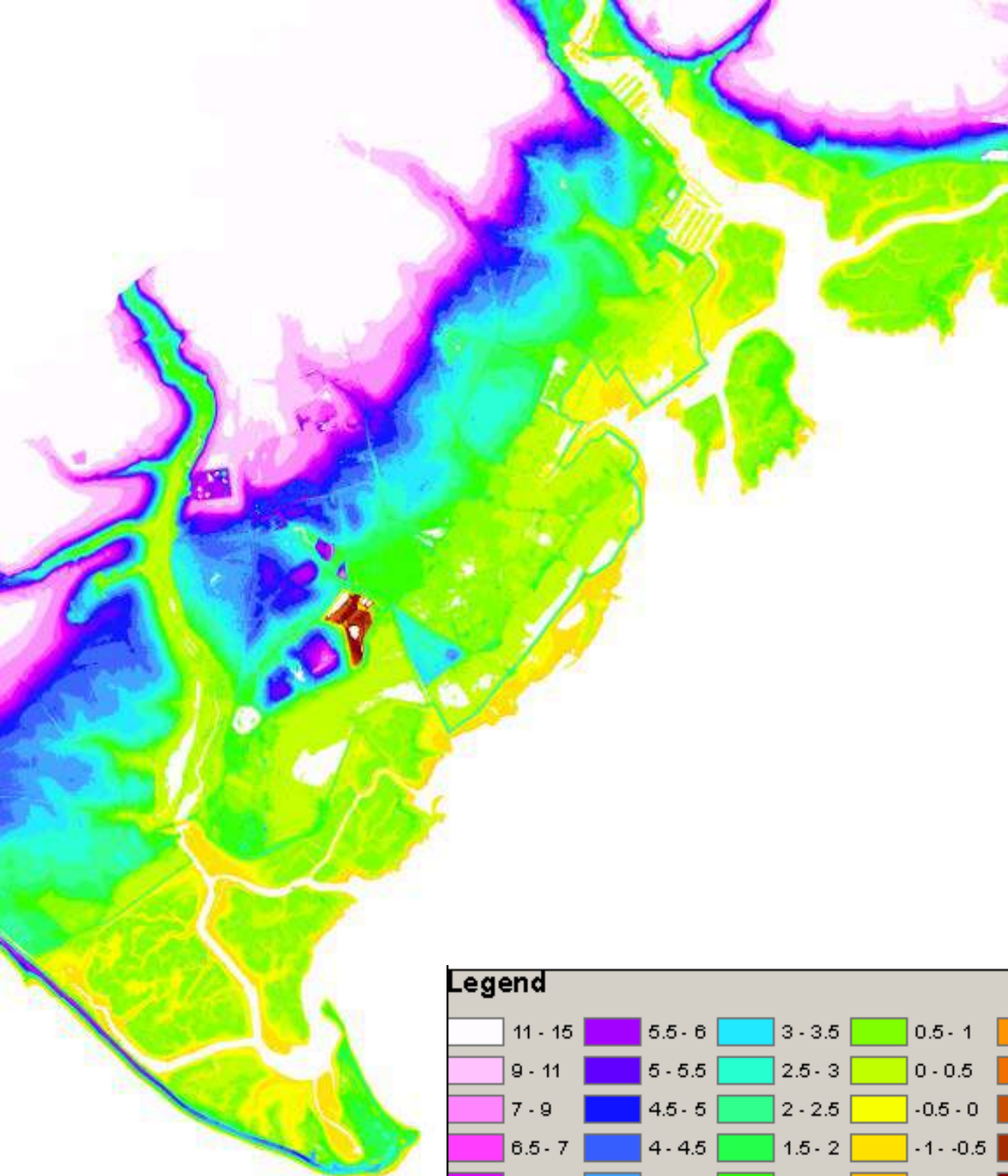




# SAC and SPA



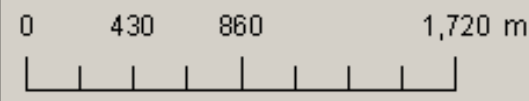




MHWS = 1m

**Legend**

11 - 15	5.5 - 6	3 - 3.5	0.5 - 1	-2 - -1.5
9 - 11	5 - 5.5	2.5 - 3	0 - 0.5	-2.5 - -2
7 - 9	4.5 - 5	2 - 2.5	-0.5 - 0	-3 - -2.5
6.5 - 7	4 - 4.5	1.5 - 2	-1 - -0.5	-3.5 - -3
6 - 6.5	3.5 - 4	1 - 1.5	-1.5 - -1	-6.5 - -3.5



# Compensation Habitat Requirements Solent & Isle of Wight

Habitat	Area (ha)			Total (ha) (cumulative)
	Epoch 1	Epoch 2	Epoch 3	
<b>Saltmarsh</b>	<b>124</b>	<b>148</b>	<b>163</b>	<b>435</b>
<b>Mudflat</b>	<b>12</b>	<b>43</b>	<b>118</b>	<b>173</b>
Freshwater habitat	0	4	0	4
Coastal grazing marsh	0	70	6	76
<b>Medmerry</b>	<b>183</b>	<b>???</b>	<b>???</b>	<b>Only 30% or intertidal so far</b>

# Programme Benefits

- ➔ **Flexible** approach to meet habitat requirements
- ➔ **Strategic:** Create habitat in advance of need
- ➔ **Efficient:** Create larger, more ecologically robust sites
- ➔ **Opportunistic:** Seize opportunities as they arise
- ➔ **Enables** and reduces delays to FCRM schemes
- ➔ **Requires** partnership working





# Working together



Local advocacy with landowners

Improved amenity & access

Green tourism

Use of LA landholdings

LA habitat creation schemes