

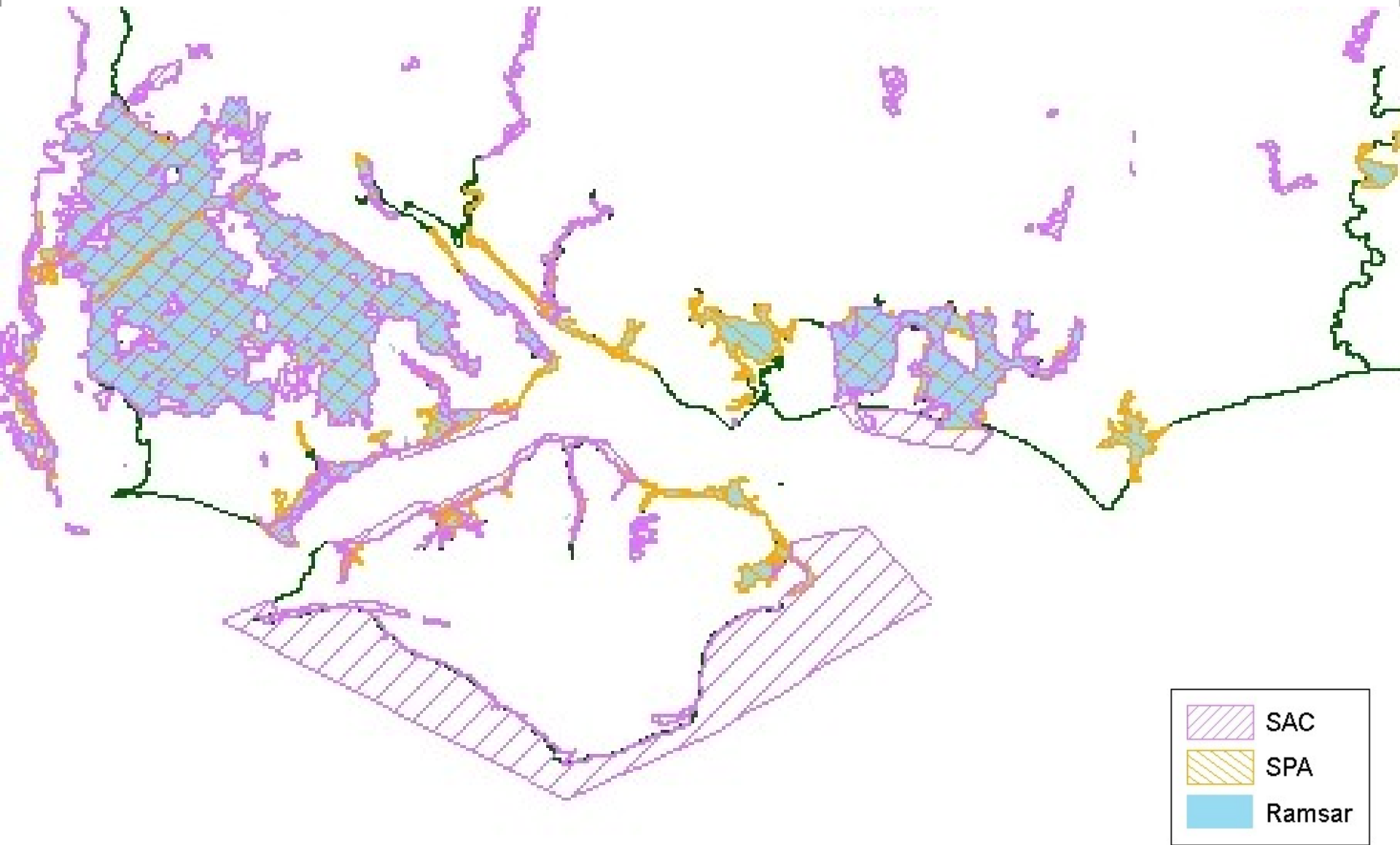
# The Habitat Creation Programme in the Solent

Emily Allison  
South East Habitat Creation Programme

# Content

- ➔ Intro to the Habitat Creation Programme
- ➔ Sites in the Solent
- ➔ Options and funding
- ➔ Working together

# Natura 2000 sites in the Solent



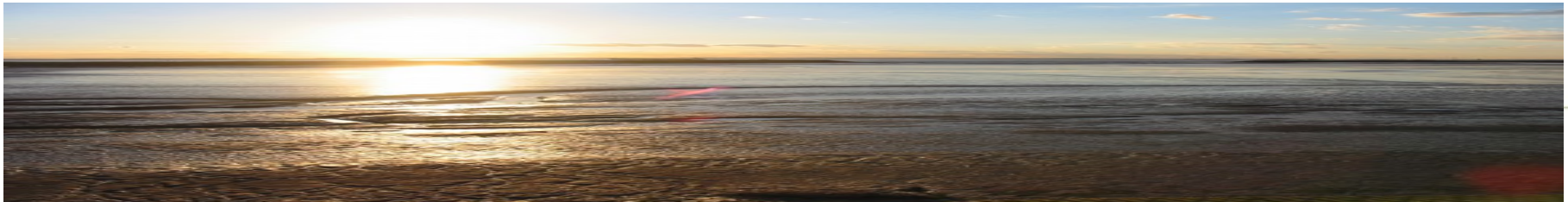
# Habitat Creation Programme

- Supports the Flood & Coastal Risk Management Programme
- Defra and Environment Agency Policy - Strategic Proactive Approach
- Ensure compliance with Habitat Regulations

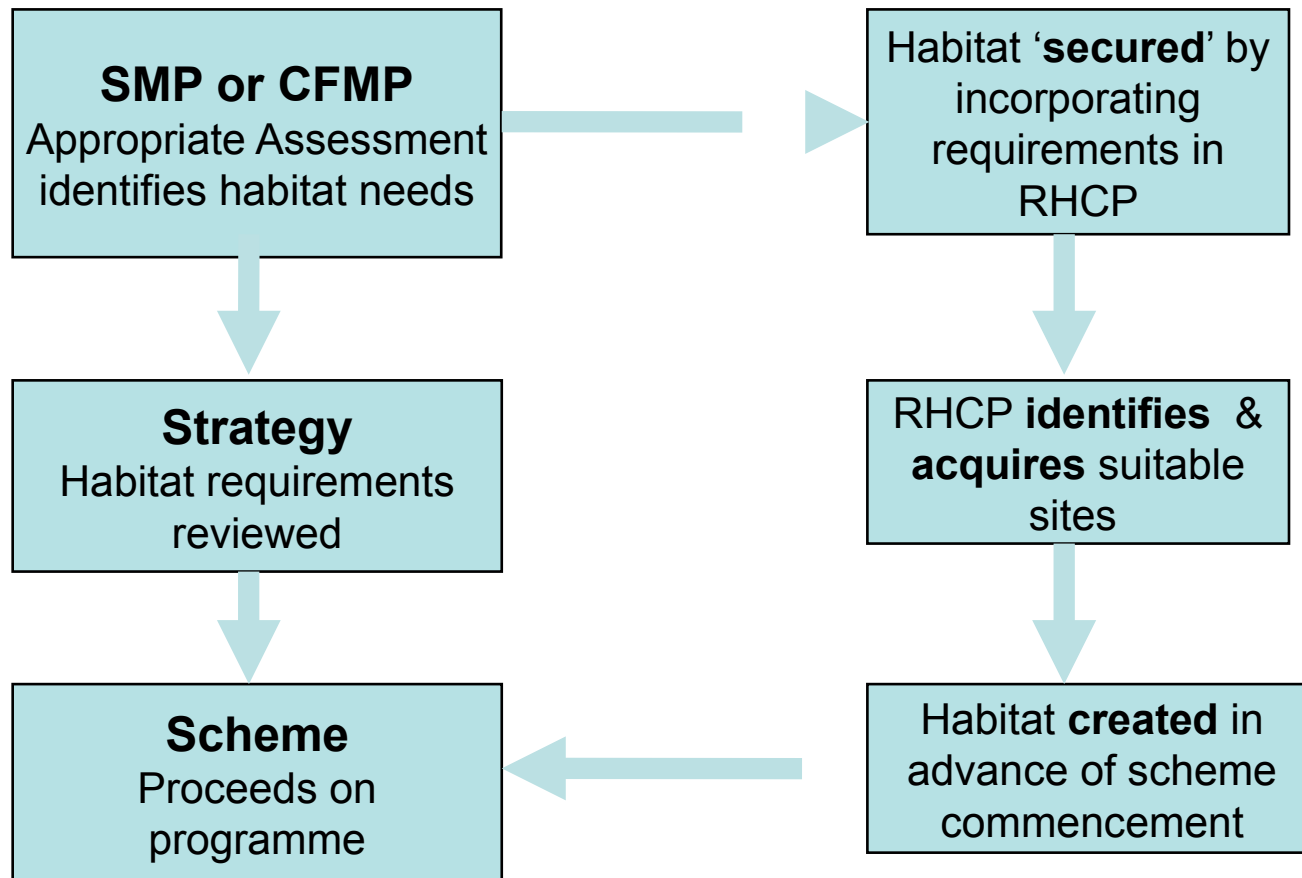


# Programme Benefits

- ➔ Flexible approach to meet habitat requirements
- ➔ Create habitat in advance of need
- ➔ Create larger, more ecologically robust sites
- ➔ Seize opportunities as they arise
- ➔ Reduce delays to FCRM schemes
- ➔ Encourages partnership working

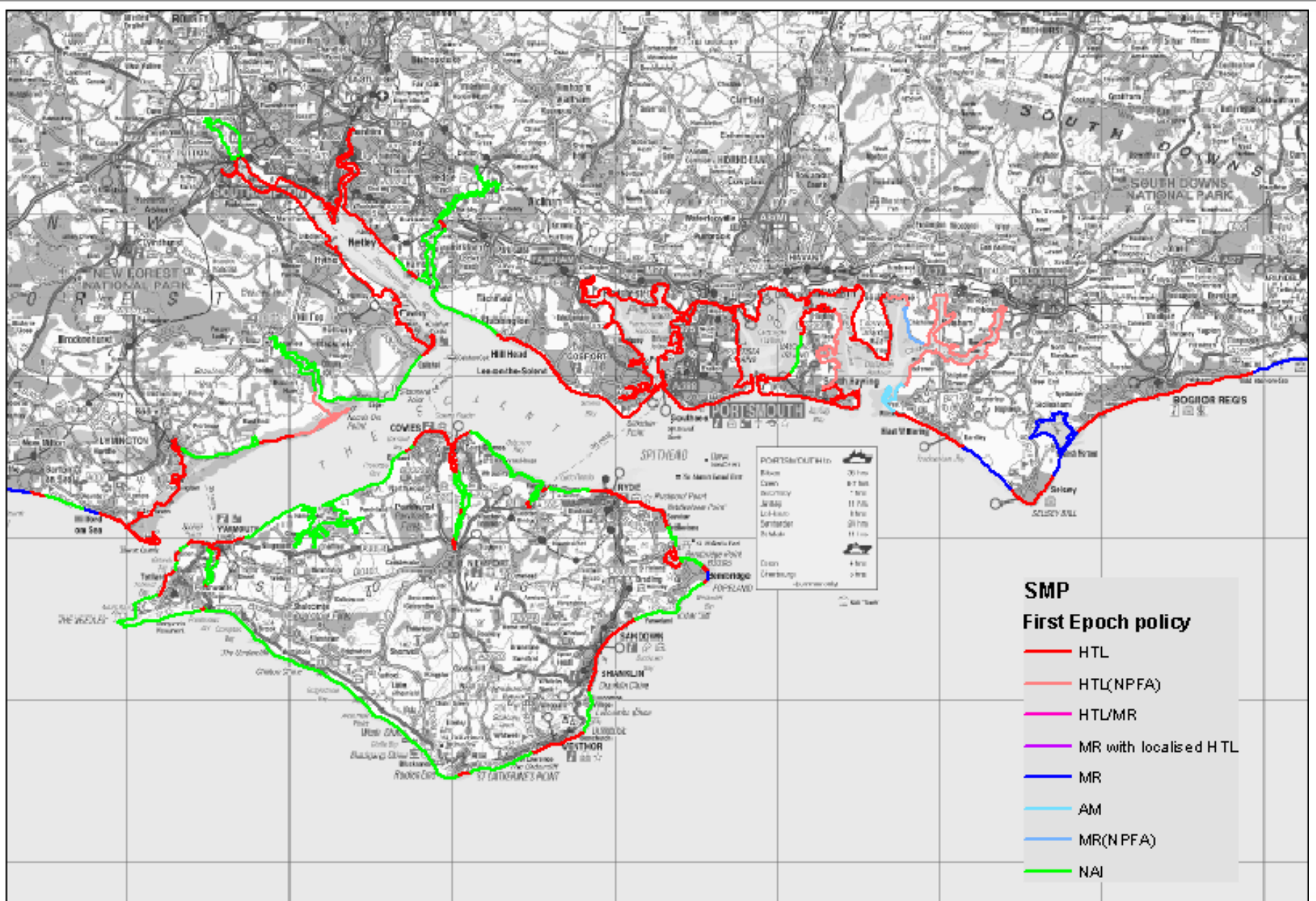


# Flood Risk Planning & the Habitat Programme



# Compensation Habitat Requirements Solent & Isle of Wight

Habitat	Area (ha)			Total (ha) (cumulative)
	Epoch 1	Epoch 2	Epoch 3	
Saltmarsh	124	148	163	435
Mudflat	12	43	118	173
Freshwater habitat	0	4	0	4
Coastal grazing marsh	0	70	6	76





# Programme Delivery

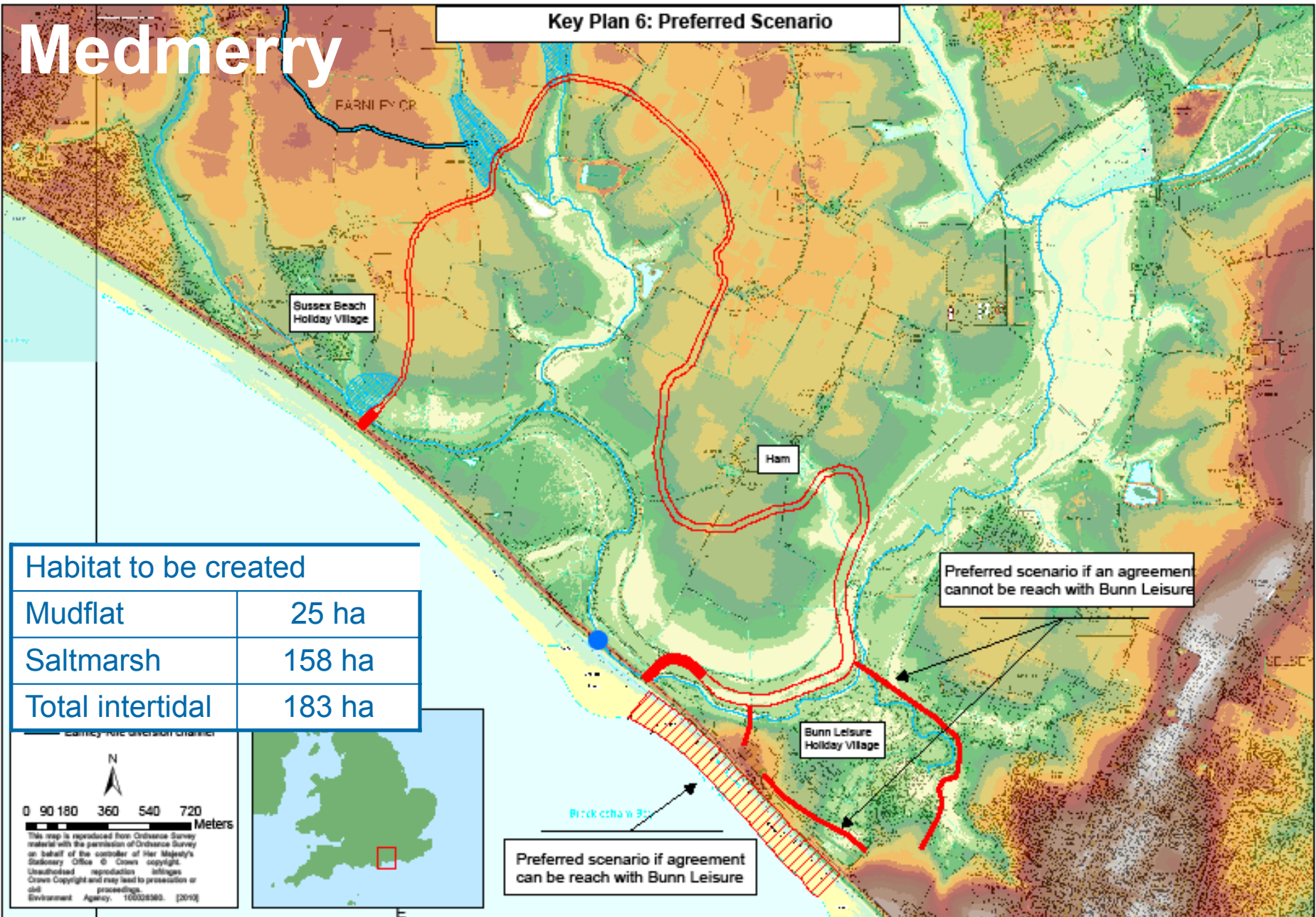
➔ Medmerry, West Sussex

➔ River Test, Hampshire



# Medmerry

## Key Plan 6: Preferred Scenario



# River Test

- ➔ GIS search and local knowledge indicated favourable for grazing marsh
- ➔ Exploring options with landowner
- ➔ Potential for ~50ha freshwater habitat
- ➔ ~25 years to develop to compensation standard



# Funding and Options for Habitat Creation

- ➔ Basic criteria = water availability
- ➔ Ownership by Local Authorities or EA through Defra Flood Defence Grant in Aid
- ➔ Ownership by third party with legal agreement
- ➔ Agri-environment funding
  - Saltmarsh creation and management <£700/ha
  - Grazing marsh creation and management <£300/ha



# Working together



Safeguard potential habitat areas

Look at multi-benefits of projects

Improved amenity & access

Green tourism

Use of LA landholdings

Local advocacy with landowners

Promote ecological management